



MEETING EXPECTATIONS

KAPHS

About Us

Headquartered in Switzerland, KAPHS is a leading supplier of High-end Architectural Products.

We specialise in high-end architectural metal and glass products for facade application as well as interior and provide complete engineering from concept to execution.

Since its founding in 2003, KAPHS has achieved considerable success through the provision of speciality architectural products in Europe, the Middle East, North Africa and South East Asia.

KAPHS

Metal Elements

KAPHS Metal Elements include:

- ❖ Expanded Metal Mesh
- ❖ Woven Wire Mesh
- ❖ Double Anodized Aluminium
- ❖ Cast Aluminium

Glass Products

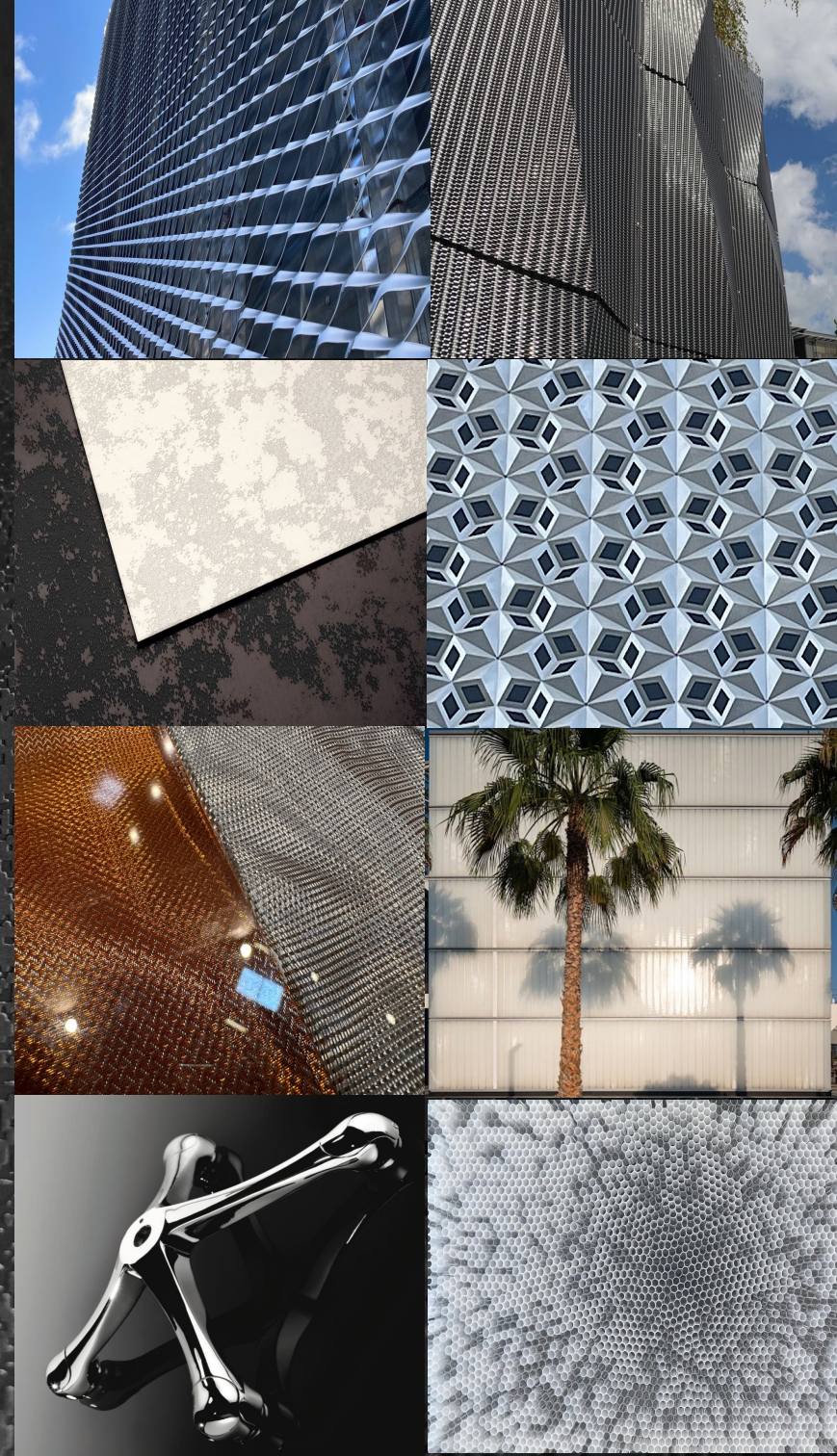
KAPHS Glass Products include:

- ❖ Lumière Priva Decorative Mesh Glass
- ❖ U-Channel Glass
- ❖ Honeycomb Insulated Glass

LISUS Architectural Hardware

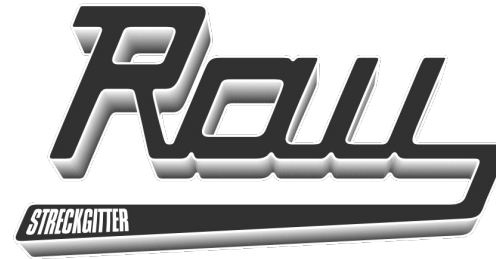
LISUS Architectural Hardware includes:

- ❖ Spider Fittings
- ❖ Connectors
- ❖ Balustrades



RAU Streckgitter

A KAPHS Partner



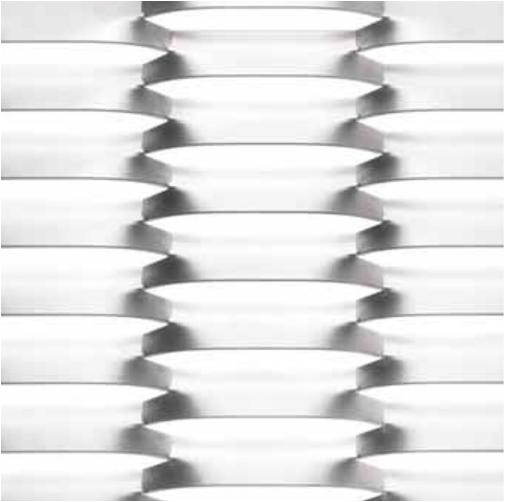
The Rau Streckgitter company can look back on more than 60 years of know-how in its own production. The experience is reflected in flexible production processes, which also enable the short-term realization of even larger series. We have experience in stretching all suitable materials: in addition to sheet steel, aluminium and stainless steel, we also process brass, copper, silver and even gold. Various processes such as anodizing, powder coating, hot-dip galvanizing and galvanizing are available for the different surfaces. In addition to the entire range of RAL colours, special colours are also possible with powder coating.

RAU Streckgitter

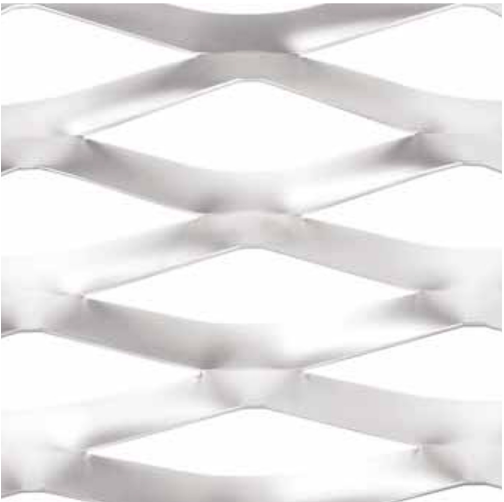
Mesh Types



LW	SW	THK	KG/M²	OPEN %
250mm	82mm	2mm	2.90	55%



LW	SW	THK	KG/M²	OPEN %
225mm	35mm	2mm	4.60	23%



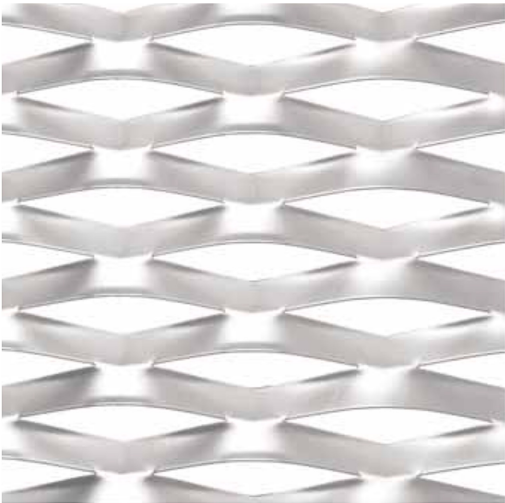
LW	SW	THK	KG/M²	OPEN %
250mm	82mm	3mm	4.90	40%



LW	SW	THK	KG/M²	OPEN %
200mm	70mm	2mm	3.10	46%

RAU Streckgitter

Mesh Types



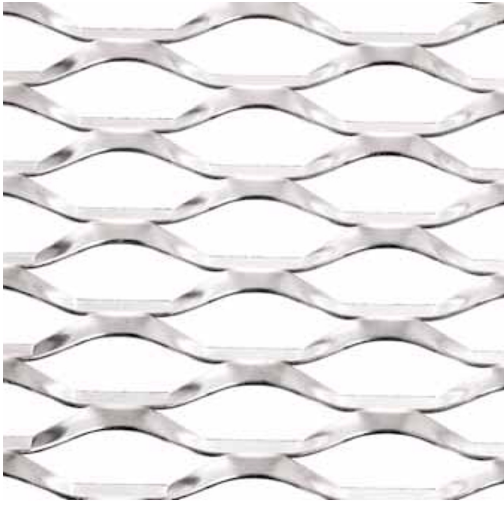
LW	SW	THK	KG/M ²	OPEN %
150mm	62mm	2mm	4.00	29%



LW	SW	THK	KG/M ²	OPEN %
115mm	48mm	2mm	4.20	20%



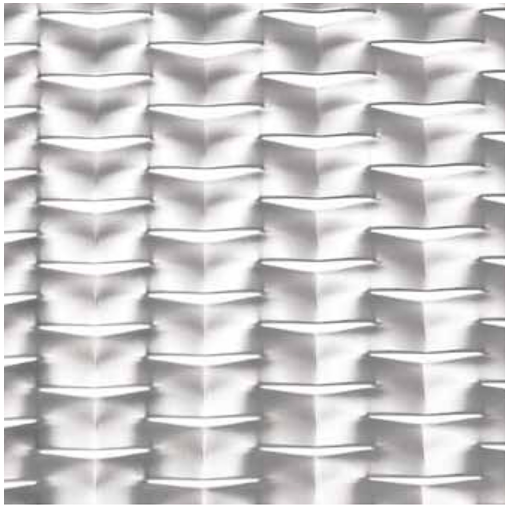
LW	SW	THK	KG/M ²	OPEN %
110mm	52mm	2mm	4.70	13%



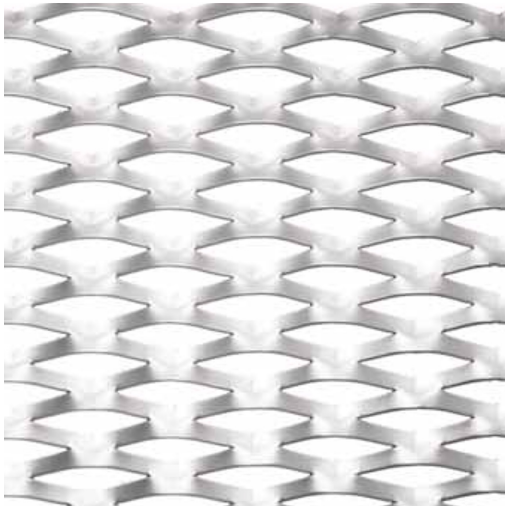
LW	SW	THK	KG/M ²	OPEN %
100mm	34mm	2mm	2.95	52%

RAU Streckgitter

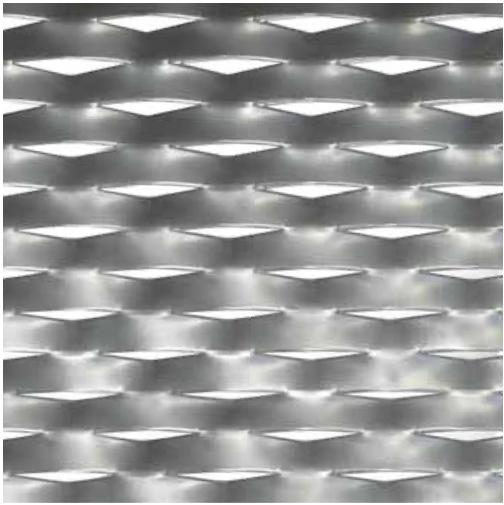
Mesh Types



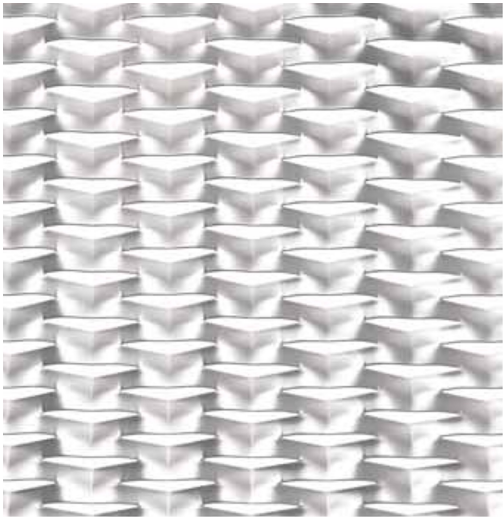
LW	SW	THK	KG/M²	OPEN %
85mm	24mm	2mm	4.95	10%



LW	SW	THK	KG/M²	OPEN %
62mm	25mm	2mm	3.6	26%



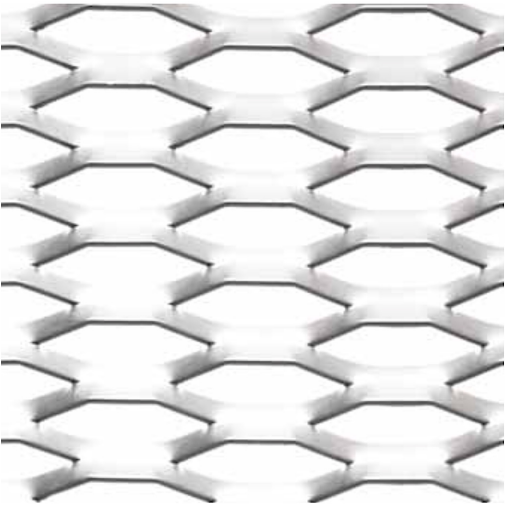
LW	SW	THK	KG/M²	OPEN %
62mm	29mm	2mm	5.20	8%



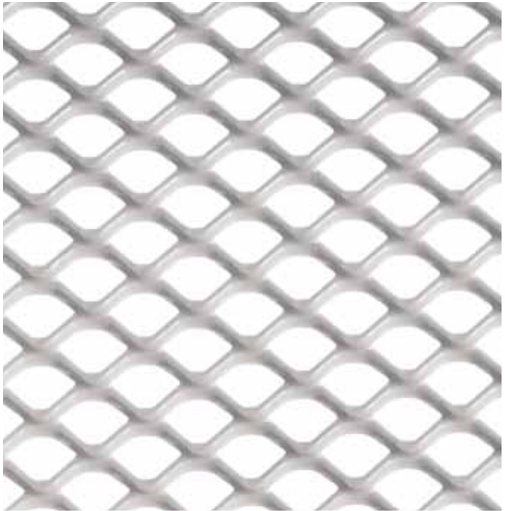
LW	SW	THK	KG/M²	OPEN %
62mm	21.5mm	2mm	3.80	34%

RAU Streckgitter

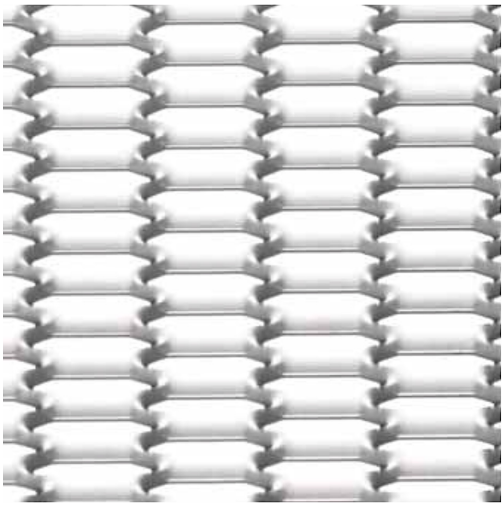
Mesh Types



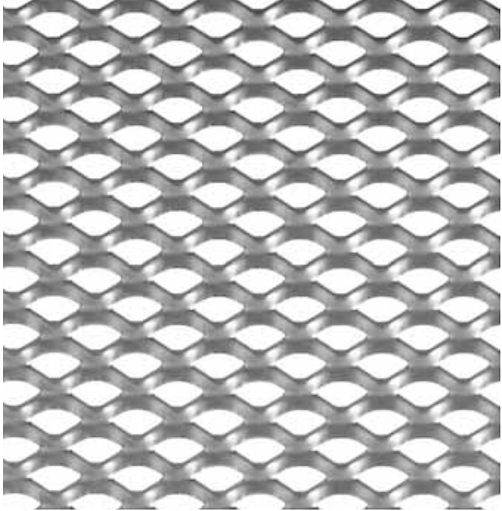
LW	SW	THK	KG/M²	OPEN %
52mm	15mm	2mm	3.2	38%



LW	SW	THK	KG/M²	OPEN %
20mm	14mm	2mm	2.3	50%



LW	SW	THK	KG/M²	OPEN %
45mm	10mm	2mm	3.90	25%

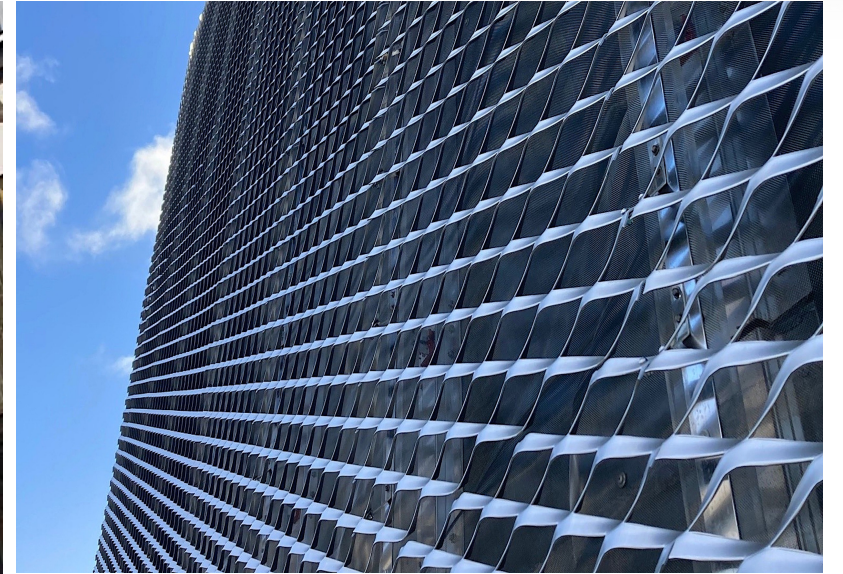
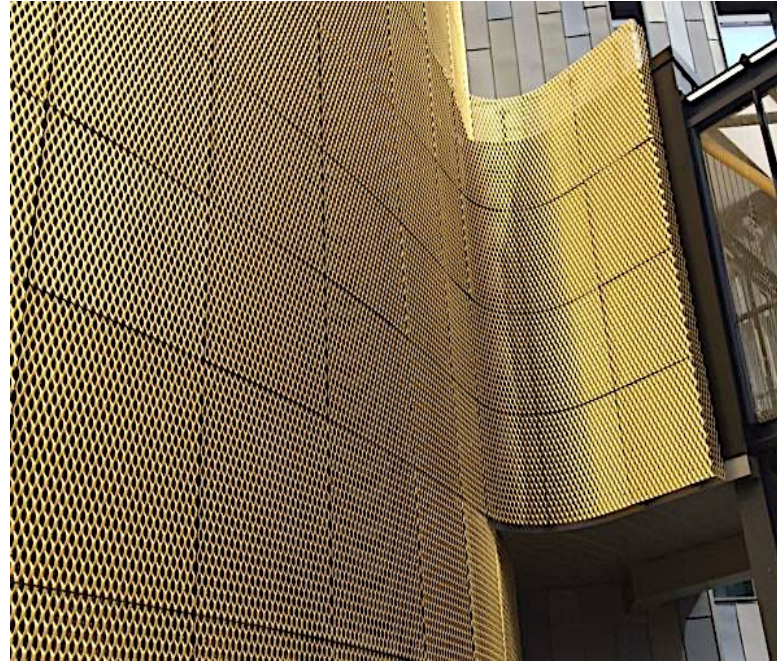


LW	SW	THK	KG/M²	OPEN %
16mm	11mm	2mm	3.00	45%

RAU Streckgitter

Façade Cladding

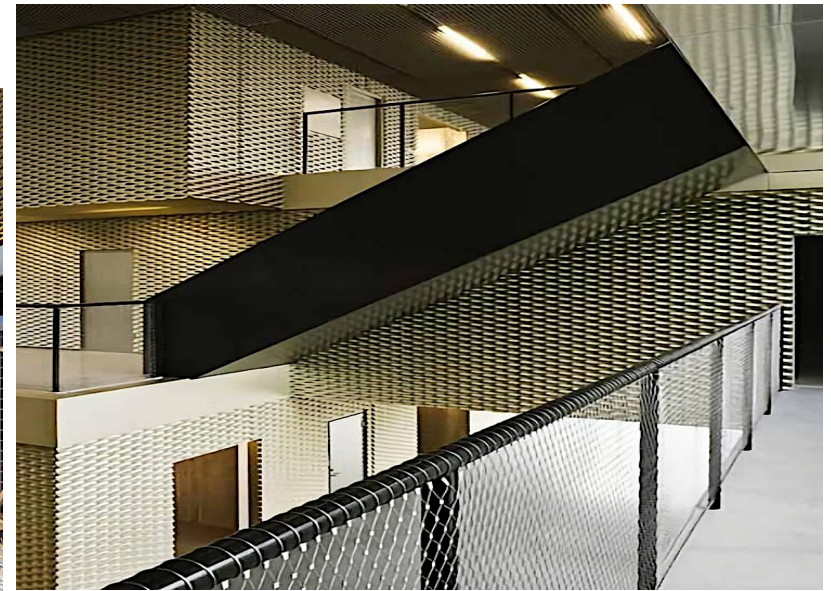
Expanded Metal Mesh is an economic, durable, and sustainable product, that meets the key performance factors for facade cladding design. The openings in the material allow air and light to flow and shine through into the building, while still providing a protective screen from harsher winds and light.



RAU Streckgitter

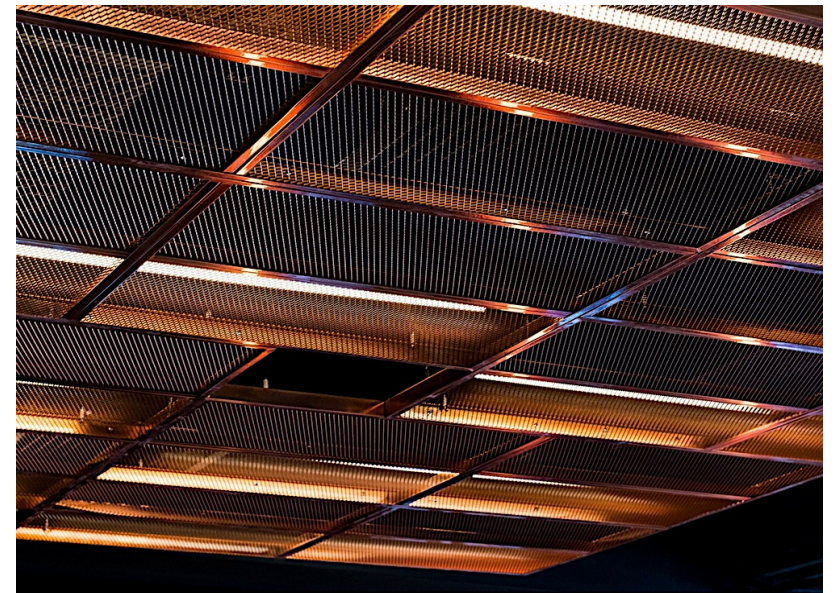
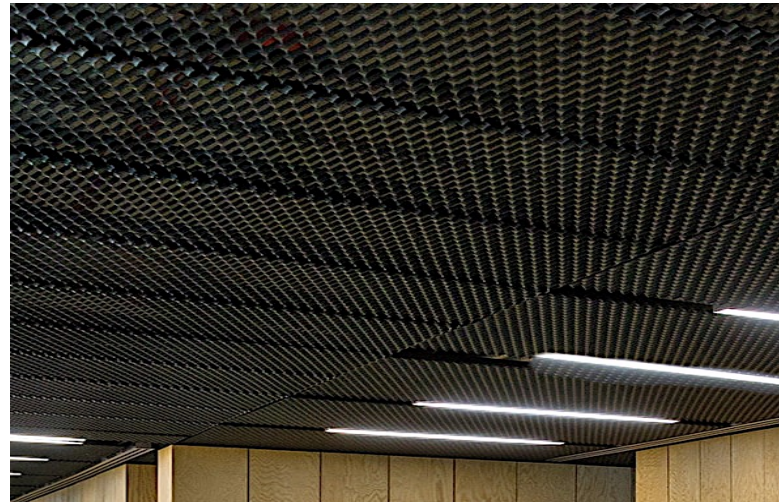
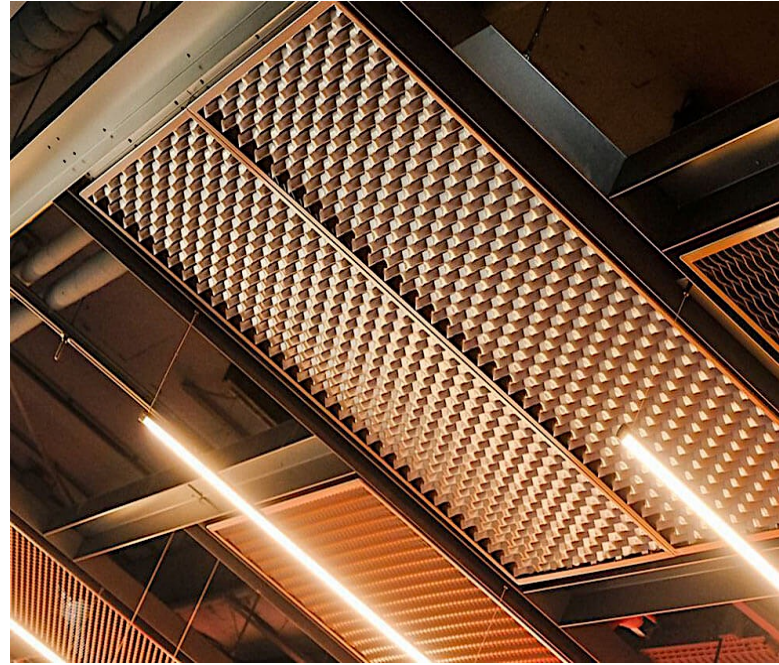
Interior Wall Cladding

The range of materials, colours, patterns, finishes and textures makes expanded metal mesh a great choice for architectural fabrications. Expanded metal mesh is a contemporary material for highly visible interior design and exterior features, offering control over appearance and function. Shifts in sunlight and season continue to provide a uniquely appealing aesthetic on any structure.



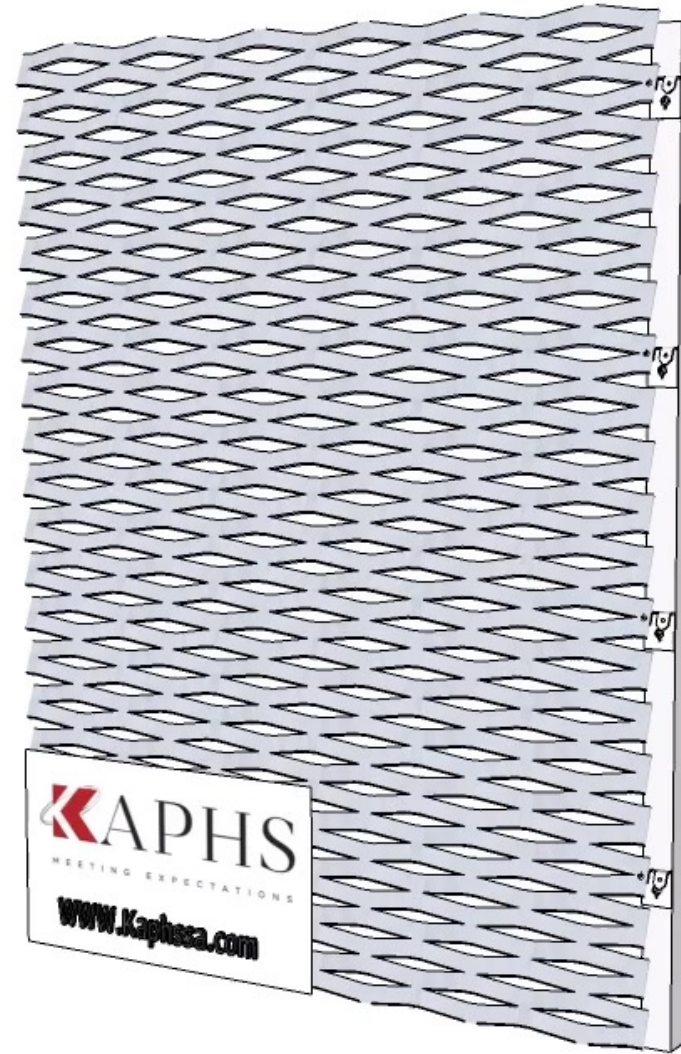
RAU Streckgitter Ceiling Systems

We manufacture and supply a range of meshes for use in the manufacture of decorative metal mesh ceiling tiles and the building of mesh ceilings – there are numerous patterns to choose from, which allows interior designers and architects to select a solution that will complement other design elements. Steel mesh ceiling tiles, stainless steel mesh Ceiling Tiles and Aluminium Mesh Ceiling Tiles are all available.



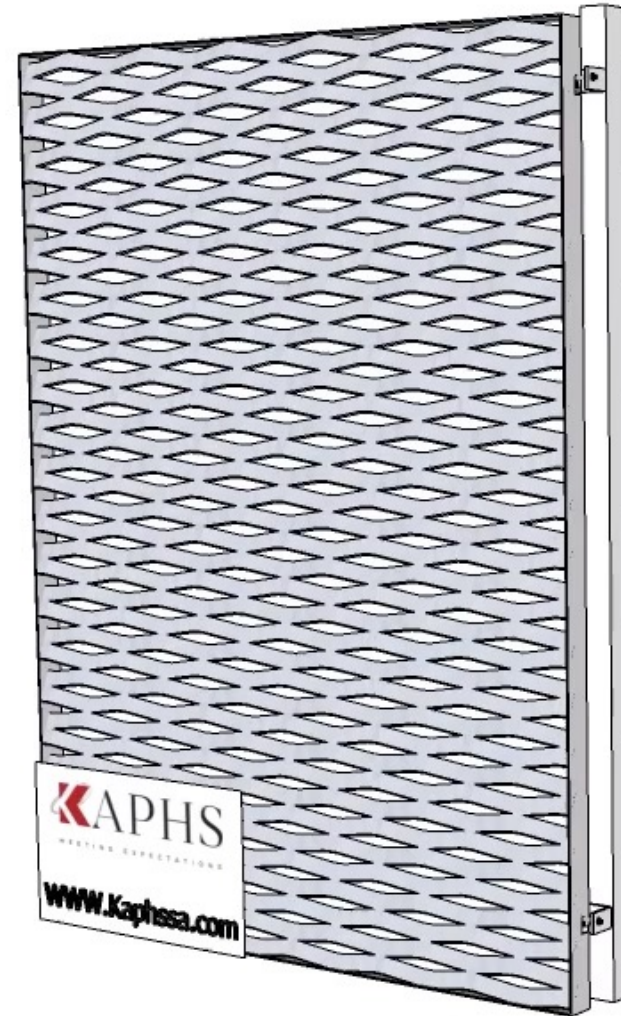
RAU Streckgitter

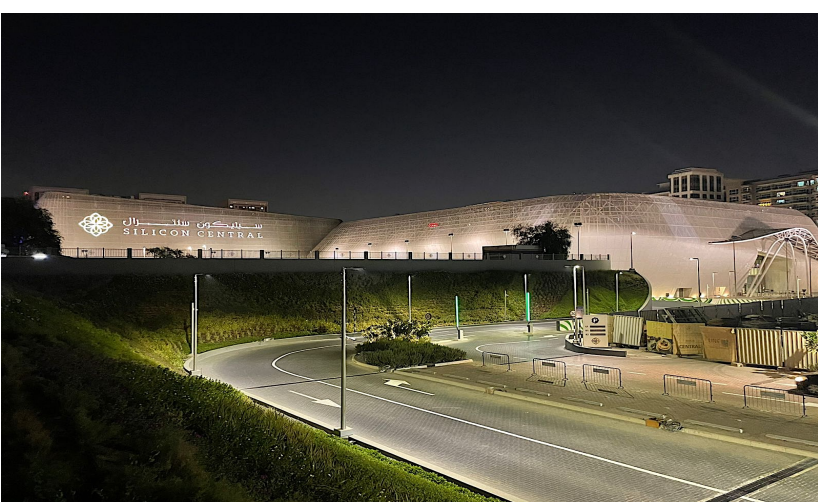
Frameless
Bracket Systems



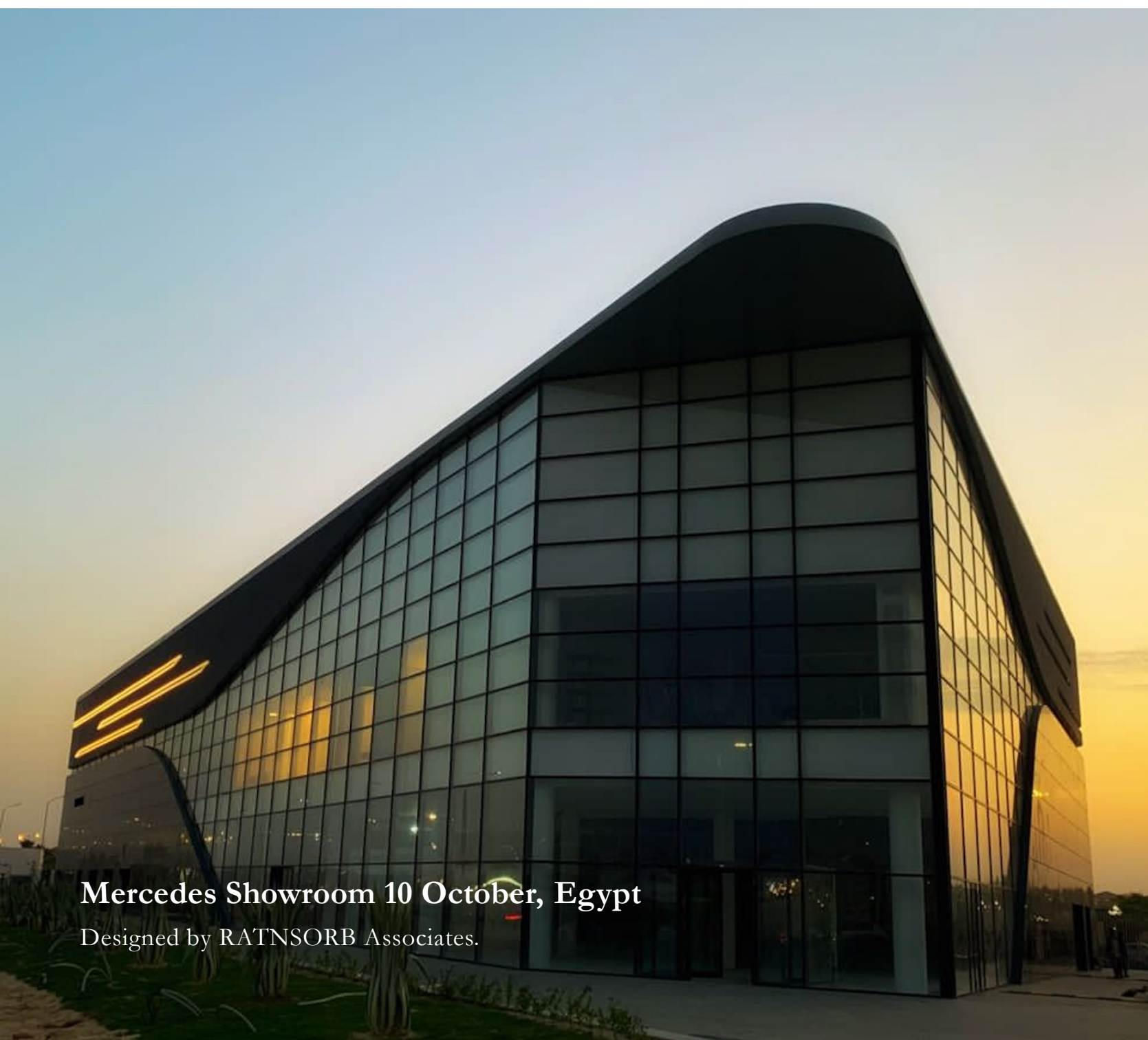
RAU Streckgitter

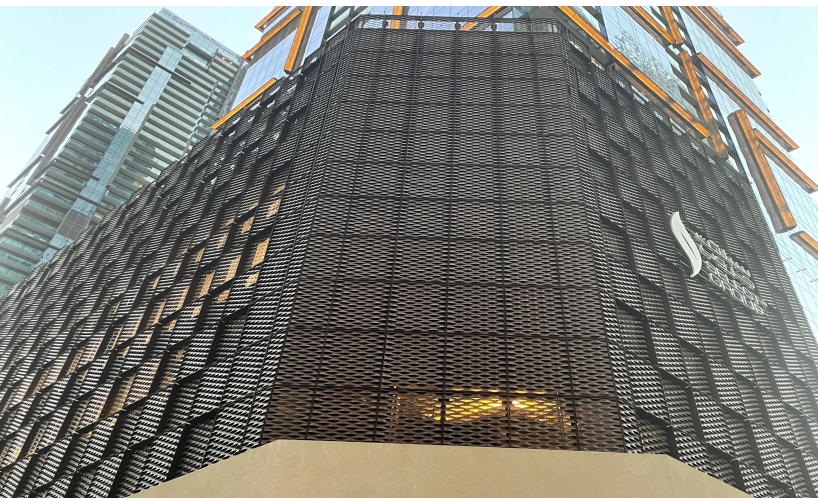
Frameless
Bracket Systems





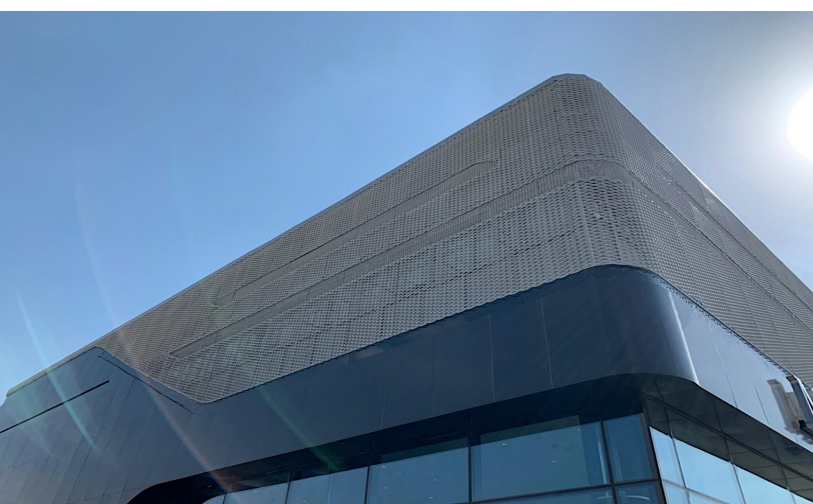
Silicon Central, Dubai
Designed by Design International





Marina Gate Tower 3, Dubai

Designed by AEDAS



Mercedes-Benz Showroom, Cairo

Designed by RATNSORB Associates



Dubai Mall Zabeel, UAE
Designed by BSBG



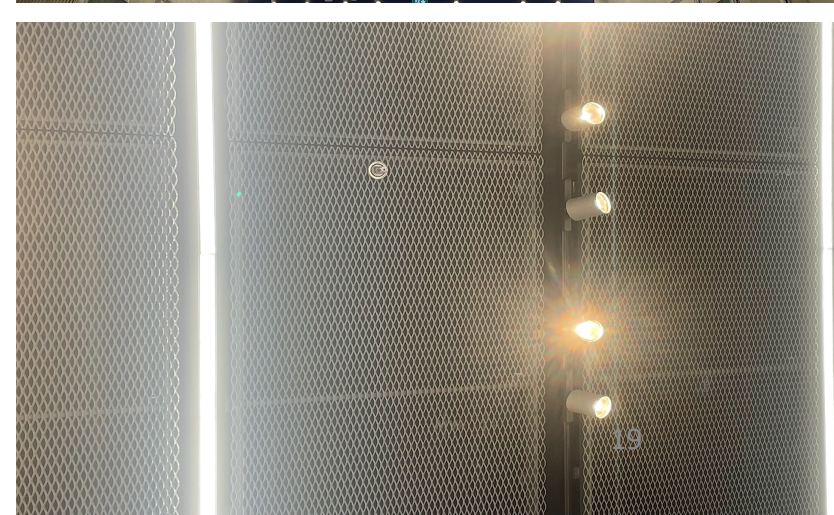
DIFC Gate Avenue, Dubai

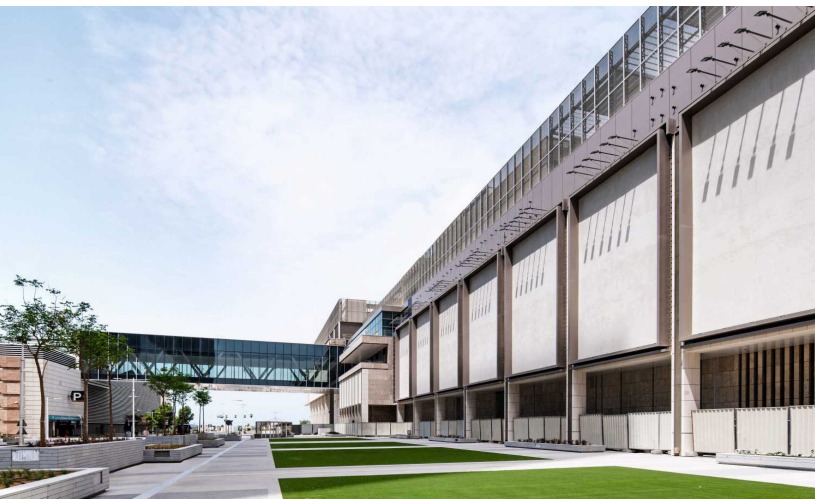
Designed by RMJM





Adidas Originals Store Dubai Mall
Designed by Adidas





Al Maryah Central, Abu Dhabi

Designed by Elkus Manfredi Architects



Tiara United Towers, Dubai

Designed by ADPI





Middle East
Project
References

PROJECT	LOCATION	CONSULTANT	SQM AREA	APPLICATION
Sea World	Abu Dhabi, UAE	Aecom	4’000 SQM	Facade
Al Mariyah Central	Abu Dhabi, UAE	Elkus Manfredi	10’000 SQM	Canopy
Bluewaters Residential	Dubai, UAE	10 Design	11’000 SQM	Canopy
Tiara United Towers	Dubai, UAE	ADPI	8’100 SQM	Ventilated Car Park
Silicon Central	Dubai, UAE	Design International	40’000 SQM	Facade
Marina Gate Tower 3	Dubai, UAE	AEDAS	3’500 SQM	Ventilated Car Park
DIFC	Dubai, UAE	RMJM	1’000 SQM	Cladding
Dubai Mall	Dubai, UAE	BSBG	1’000 SQM	Cladding
Mercedes Showrooms	Egypt	RATNSORB Associates	Multiple	Cadding
Adidas Showrooms	Dubai, UAE	Adidas	Multiple	Ceiling
STC Headquarter	Riyadh, KSA	Khatib & Alami	430 SQM	Facade
Rayban Stores	Dubai, UAE	Store Morion	Multiple	Ceiling & Partitions
Manyata Park	Bangalore, India		2’000 SQM	Façade
Priva Villas Kawaneej	UAE	RCR	14’000 SQM	Envelope

Haver & Boecker

A KAPHS Partner

HAVER & BOECKER

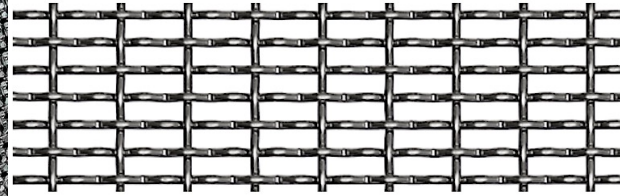


Architectural Wire Mesh offers architects and planners a multitude of design options for exterior façades which combine sophisticated aesthetic features with functional benefits.

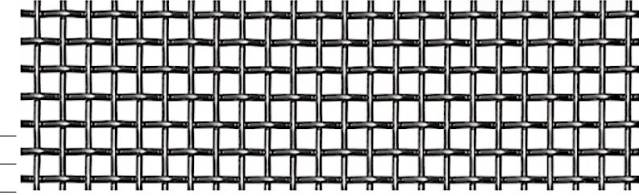
A wide range of different types of mesh can enhance the appearance of a building, giving it immense individual character. Depending on the lighting conditions and the viewing angle, the material can appear transparent or opaque. Light and shade, sunshine and cloud are reflected on the surface of the mesh creating either a shimmering metallic effect or the impression that the building has a second skin.

Haver & Boecker

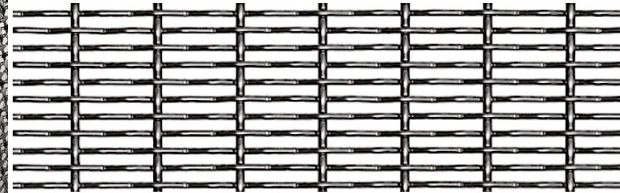
Wire Mesh Types



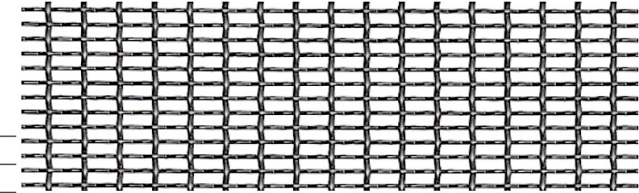
DOKAWELL-MONO 3381	
G^{y} (kg/m ²)	A_o^{z} %
6.4	55



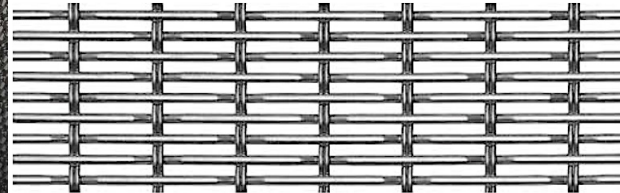
DOKA-MONO 1601	
G^{y} (kg/m ²)	A_o^{z} %
6.0	51



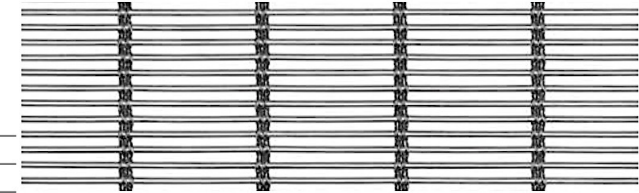
DOKAWELL-MONO 3601	
G^{y} (kg/m ²)	A_o^{z} %
5.3	52



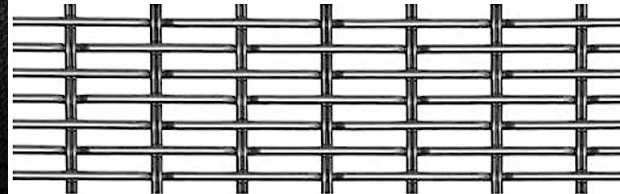
DOKAWELL-MONO 3001	
G^{y} (kg/m ²)	A_o^{z} %
3.2	56



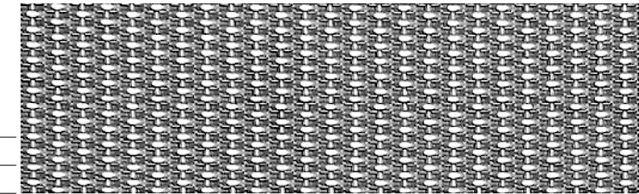
EGLA-TWIN 4223	
G^{y} (kg/m ²)	A_o^{z} %
7.2	43



MULTI-BARRETTE 8106	
G^{y} (kg/m ²)	A_o^{z} %
5.2	45



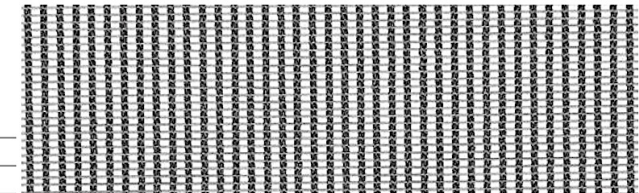
EGLA-TWIN 4253	
G^{y} (kg/m ²)	A_o^{z} %
6.0	51



DENSIS 5811	
G^{y} (kg/m ²)	A_o^{z} %
13.6	-



EGLA-DUO 4262	
G^{y} (kg/m ²)	A_o^{z} %
6.6	52



MINIFLEX 8135	
G^{y} (kg/m ²)	A_o^{z} %
2.1	39

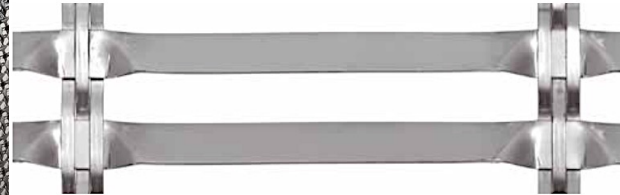
Haver & Boecker

Wire Mesh Types



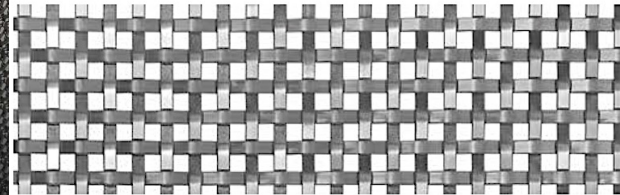
LARGO-PLENUS 2022

G^0 (kg/m ²)	A_o^2 %
8.1	25



LARGO-TWIST 2045

G^0 (kg/m ²)	A_o^2 %
5.5	38



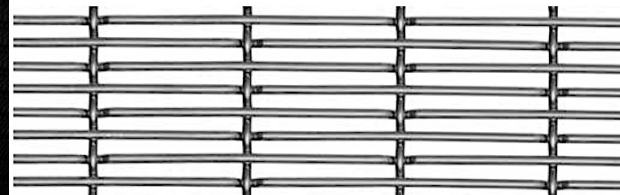
LARGO-PLENUS 2027

G^0 (kg/m ²)	A_o^2 %
8.1	25



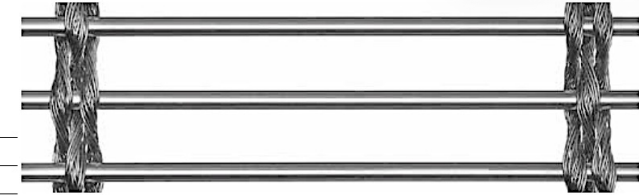
EGLA-MONO 4631

G^0 (kg/m ²)	A_o^2 %
7.3	58



EGLA-MONO 4391

G^0 (kg/m ²)	A_o^2 %
6.2	52



MULTI-BARETTE 8301

G^0 (kg/m ²)	A_o^2 %
8.0	67



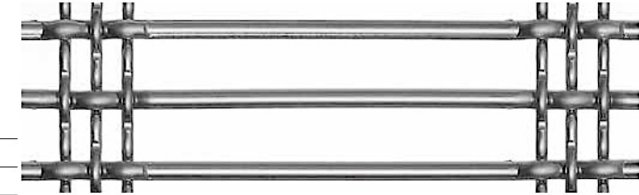
MULTI-BARETTE 8123

G^0 (kg/m ²)	A_o^2 %
6.6	64



MULTI-BARETTE 8130

G^0 (kg/m ²)	A_o^2 %
10.2	46



DOGLA-TRIO 1011

G^0 (kg/m ²)	A_o^2 %
8.5	66



DOGLA-TRIO 1033

G^0 (kg/m ²)	A_o^2 %
6.5	67

Haver & Boecker

Benefits

Architectural Mesh opens up a wide range of creative design possibilities and is the optimal solution in many areas:

- Mesh Façades
- Sun Protection Façades
- Wall Coverings
- Ceiling Systems
- Railing Infill or Acoustic Systems



Natural ventilation

The transparency of an architectural mesh allows natural ventilation. The open area of the mesh can be adjusted to meet particular aeration and ventilation requirements.



Sun protection

Architectural wire mesh acts as effective sunlight protection, in particular to filter incident light and reduce warming of the building.



Fall protection

Stainless-steel wire mesh can be used as fall protection, for example in multi-storey car parks or for cladding on external staircases and balconies.



Transparency and view protection

Thanks to its structure, wire mesh provides transparency from inside when viewed front on. At the same time, mesh façades can almost have an opaque effect depending on the angle of view and lighting conditions.



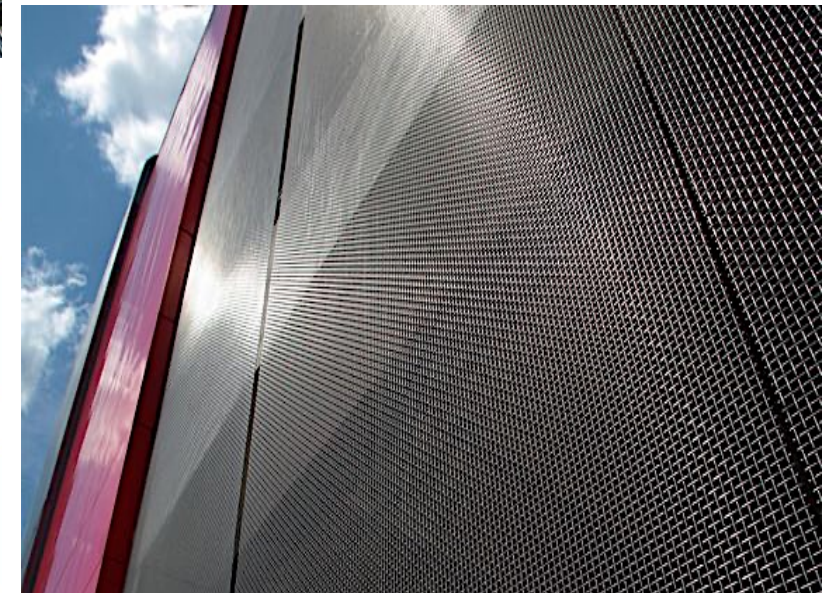
Long-life cycle

Architectural wire mesh stands out for extreme durability and is almost maintenance free due to the use of corrosion-resistant stainless steel and robust mounting technology.



Building redevelopment

Architectural wire mesh is extremely suitable for renovating, upgrading or modernising existing buildings. It is a modern design element combining old and new.



Haver & Boecker

Ventilated Façade

The transparency of metal wire mesh facades allows natural ventilation and lighting. One can usually dispense with costly ventilation systems: this not only lowers energy costs but also makes a positive contribution to preserving the environment. We adapt the open surface of the metal wire mesh in such a way that project-specific requirements on aeration and ventilation are fulfilled.

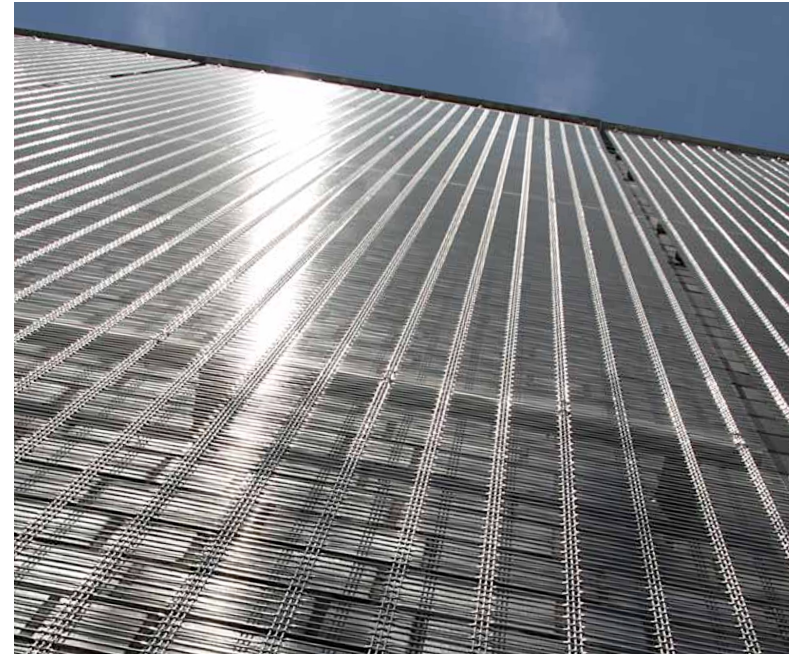


Foto: N. Kazakov

Haver & Boecker

Coloured Wire Mesh

Digital printing the display of complex graphics and fine colour gradients or photographs possible. The stainless steel wire mesh embellished with digital printing is UV-resistant and is suitable for both interior and exterior applications.

We can offer you a complete range of metallic effect colours such as gold or bronze for painting in metal special colours.

- no tarnishing
- no discolouration
- no disturbing patina

KAPHS



Haver & Boecker

Wall Cladding

Architectural Mesh offers timeless elegance, is extremely durable and is a highlight for every interior design, in particular when in combination with appropriate lighting.



Haver & Boecker

Ceilings

Architectural Wire Mesh allows prestigious and at the same time, functional ceilings designs that can creatively be designed due to the structure, type of installation and illumination – from shimmering via translucent to opaque.

Whether convex, concave or tensioned, in panels or cassettes – Wire Mesh is suitable for both large and small areas. It improves a space's acoustics and elegantly hides installations and integrated lighting



Haver & Boecker

Fixing Systems

Top mounting

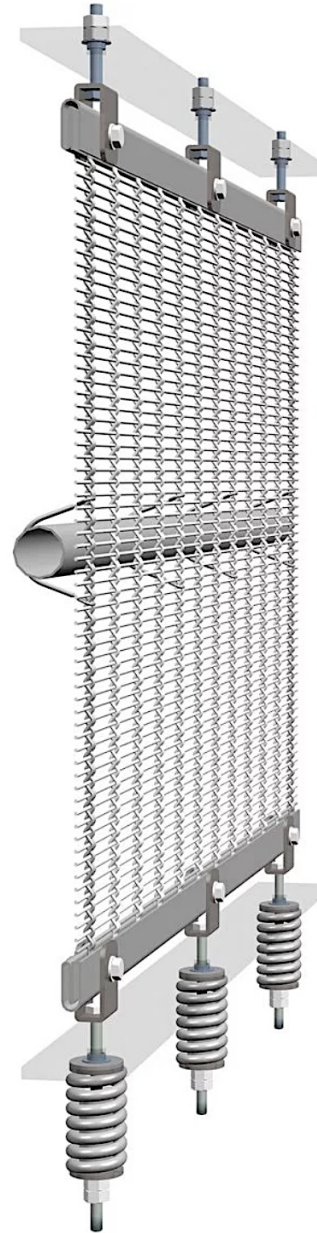
A flat tension profile is provided with clevis screws, which are used to hang the element in the substructure. At the same time, tension is applied to the upper fastening point.

Intermediate mounting

If the mesh size is large enough, the mesh element is secured by means of wire connectors. These reach around a tube lying behind the wire mesh from the back into the architectural wire mesh. This intermediate tube is barely visible in the front view.

Bottom mounting

Flat tension profiles are used for the lower fastening, through which tension is introduced into the wire mesh by means of clevis screws. The additional use of pressure springs is necessary to give the wire mesh the necessary elasticity under corresponding loads in the outdoor area.



Top mounting: flat tension profile and clevis screws.



Intermediate mounting: round tube and wire connectors.



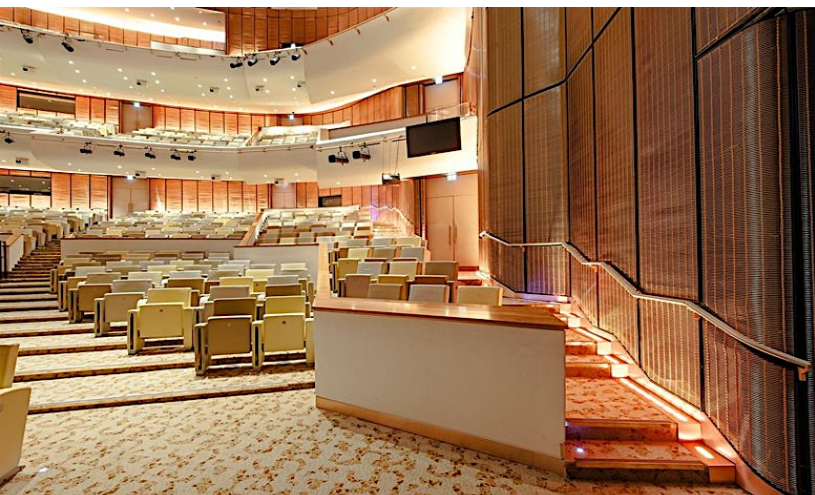
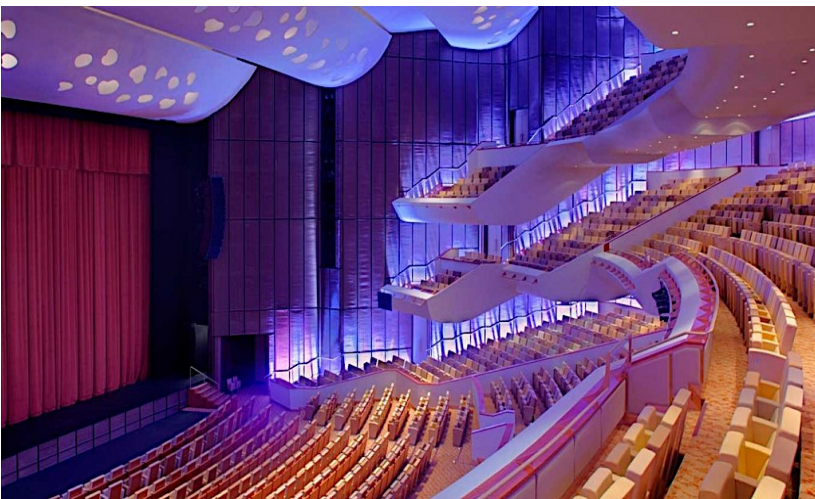
Bottom mounting: flat tension profile, clevis screws and pressure springs.



Aspire Torch Tower, Doha

Designed by Arup





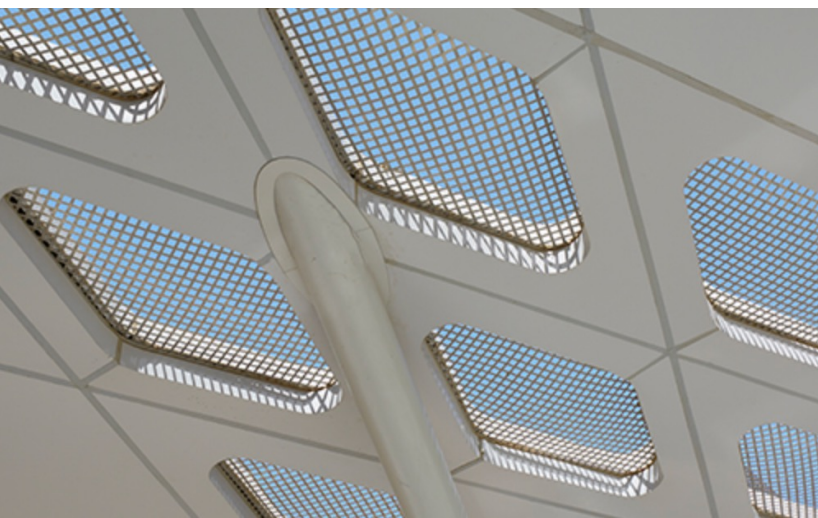
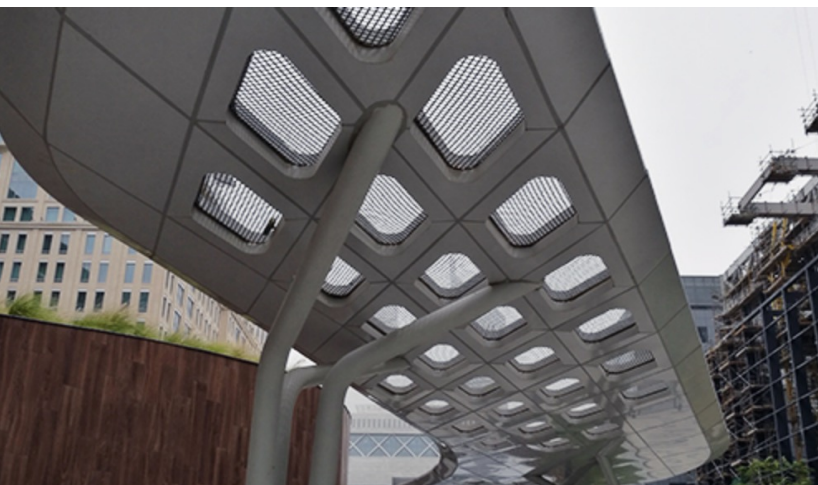
Qatar National Convention Center
Designed by Aedas



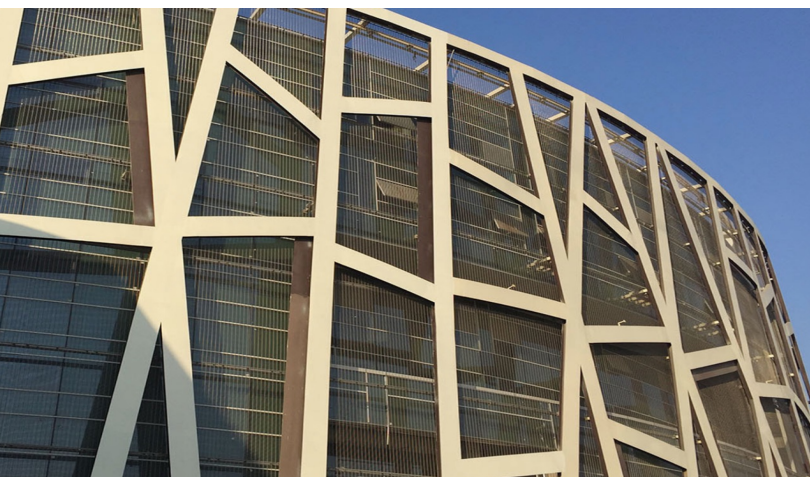
Dubai Hills Estate Business Park

Designed by Aedas





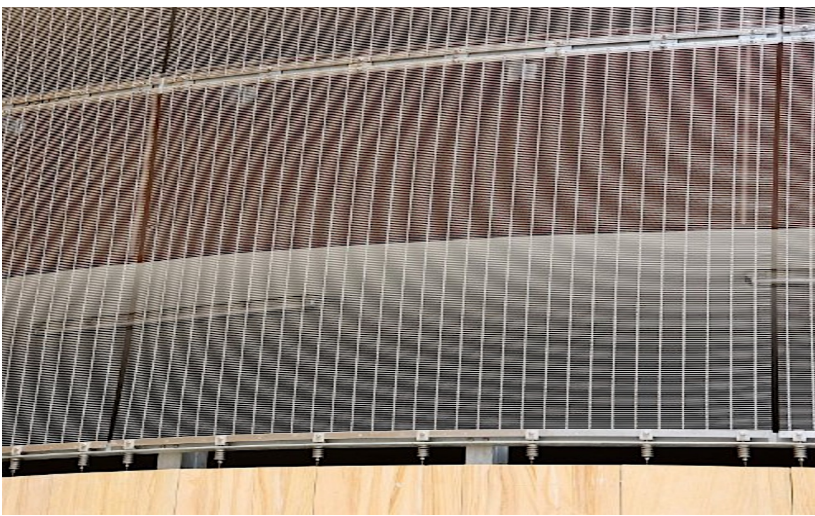
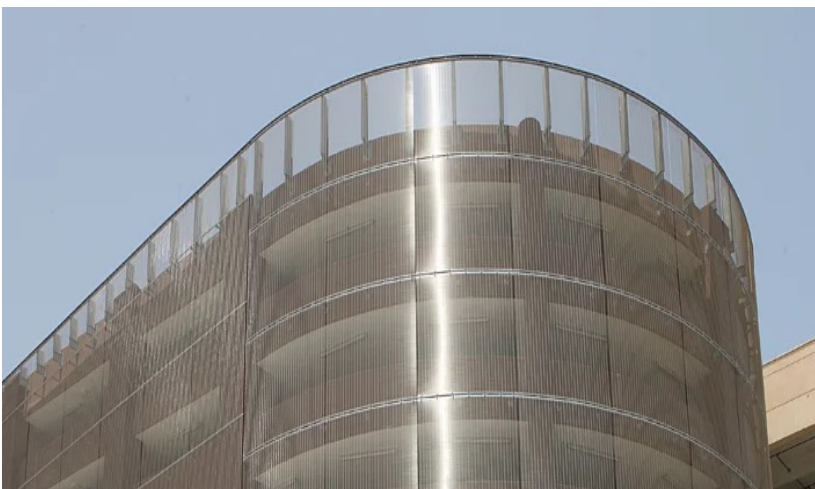
DIFC Avenue
Designed by RMJM





Al Sendian Tower, Doha
Designed by AEB





Al Naeem Mall, RAK

Designed by Rice Perry Ellis

<div> <div>  <div> <div>Middle East</div> <div>Project</div> <div>References</div> </div> </div> <div>KAPHS</div> </div>	PROJECT	LOCATION	CONSULTANT	SQM AREA	APPLICATION
	ONGC Headquarters	Delhi, India	Hafeez Contractor	10’155 SQM	Curtain-Wall Double Skin
	PAAET AESSB	Kuwait	Jassim Quabazard	7’657 SQM	Double Glazed, Interior
	National Convention Center	Qatar	AEDAS	5’670 SQM	Acoustic Wall Cladding
	West Car Park	Qatar	Atkins	4’000 SQM	Ventilated Car Park
	WTC Mall	Abu Dhabi, UAE	Foster & Partners	2’278 SQM	Laminated, Interior
	Al Naeem Mall	RAK, UAE	Rice Perry Ellis	2’250 SQM	Ventilated Car Park
	Sidra Medical Complex	Qatar	Atkins	1’610 SQM	Ventilated Car Park
	North East Car Park	Qatar	Atkins	870 SQM	Balustrade
	Dr. Ali Fetais Tower	Qatar	MZ & Partners	725 SQM	Ventilated Car Park
	Bay View	Dubai	Arkitecnik	685 SQM	Canopy
	National Museum	Qatar	Jean Nouvel	600 SQM	Interior Cladding
	Al Sendian Tower	Lusail, Qatar	AEB	3’500 SQM	Ventilated Car Park
	BCFC	Bahrain	MSCEB	1’000 SQM	Ventilated Car Park
	Al Ain Hospital	UAE	Gensler	2’500 SQM	Ceiling
	Ministries Comlex	Kuwait	PACE	5’600 SQM	Double Glazed, Interior
	GCT Headquarter	Bahrain	MSCEB	224 SQM	Interior Cladding

Middle East
Project
References

PROJECT	LOCATION	CONSULTANT	SQM AREA	APPLICATION
Dubai Hills Business Park	UAE	AEDAS	4’000 SQM	Ventilated Car Park
Aspire Torch Tower	Qatar	AEB	30’000 SQM	Facade
Energy City	Qatar	Priedman	3’000 SQM	Facade
Mercedes Showroom D3	UAE	Binchy and Binchy	440 SQM	Double Skin

KAPHS Architectural Screens

A KAPHS Brand



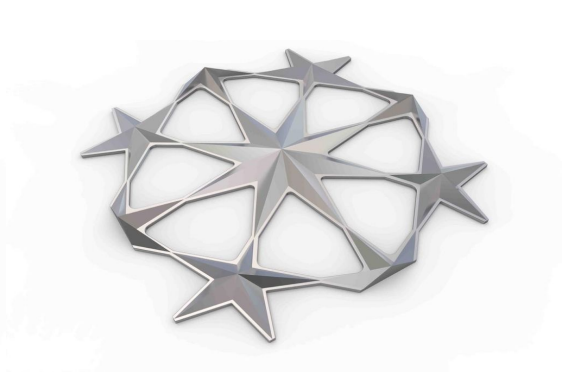
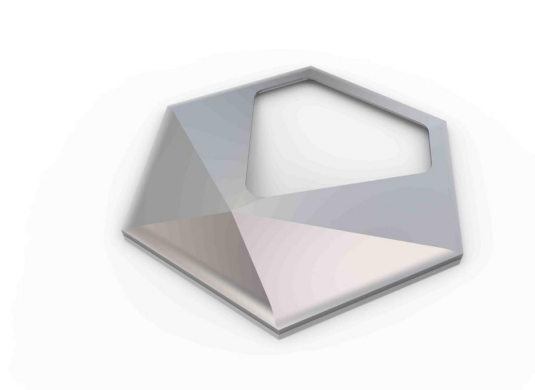
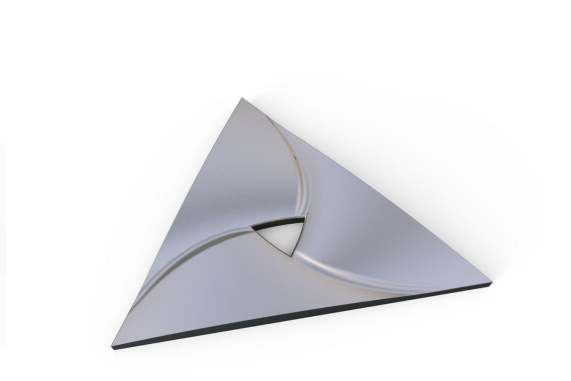
The exquisite décor products are the height of craftsmanship, created by a team of experienced and proficient designers, engineers, architects, artists, foundrymen and fabricators. KAPHS offers a wide range of products, such as aluminium Mashrabiya – a new take on traditional Arabic architecture, decorative screen panels, whose grid-like structure enhances ventilation and lighting, perforated panels known for their malleability, and aluminium dividers, which create intimacy and added style in large interiors.

KAPHS Architectural Screens

A KAPHS Brand

Our products are made with Aluminium Casting which ensure flexibility, strength, reduced wastage and seamless finishing of products.

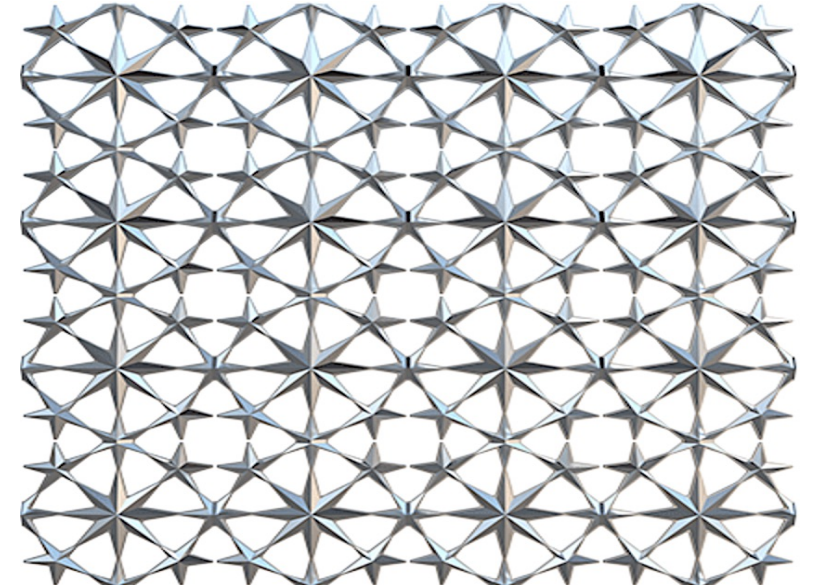
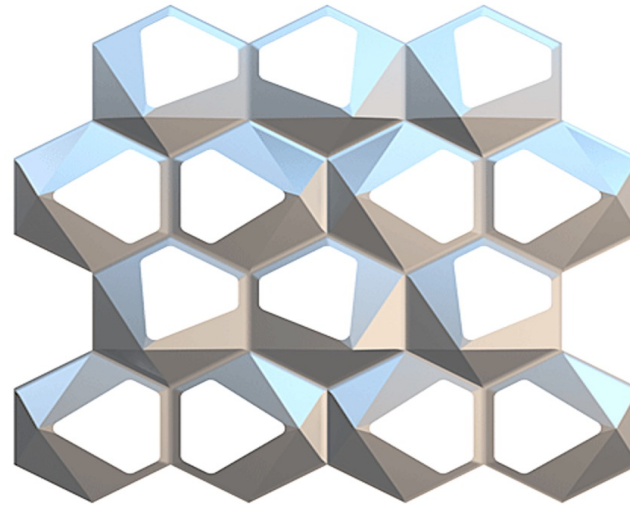
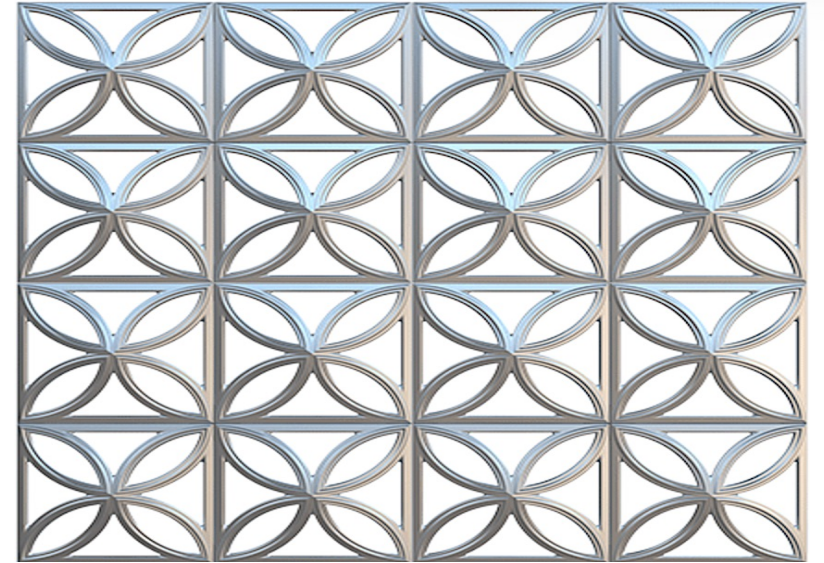
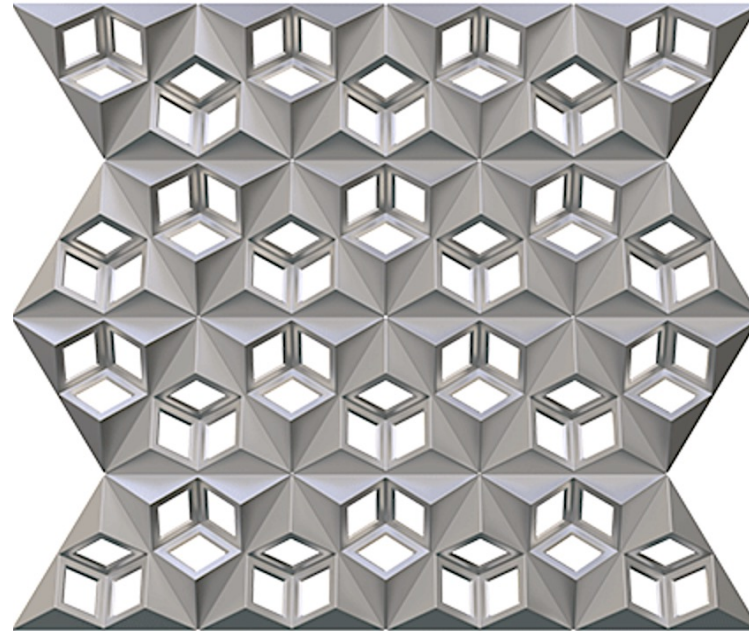
The design modularity aspect of our products enables continuous improvement and innovation of designs and sustainability of products.



KAPHS Architectural Screens

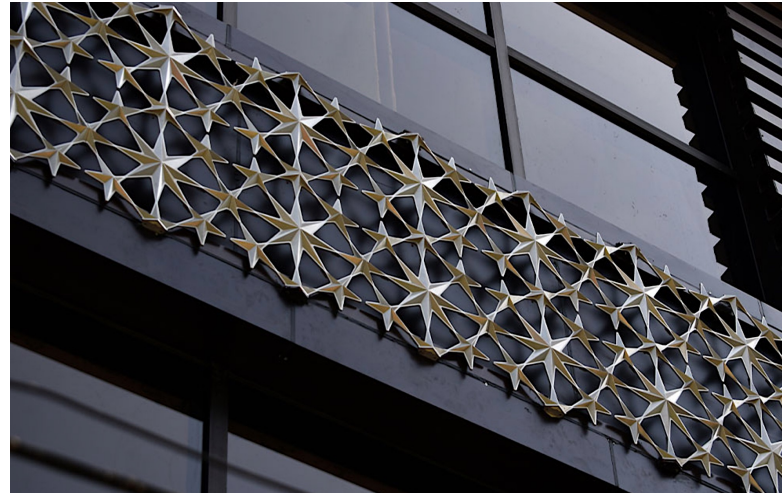
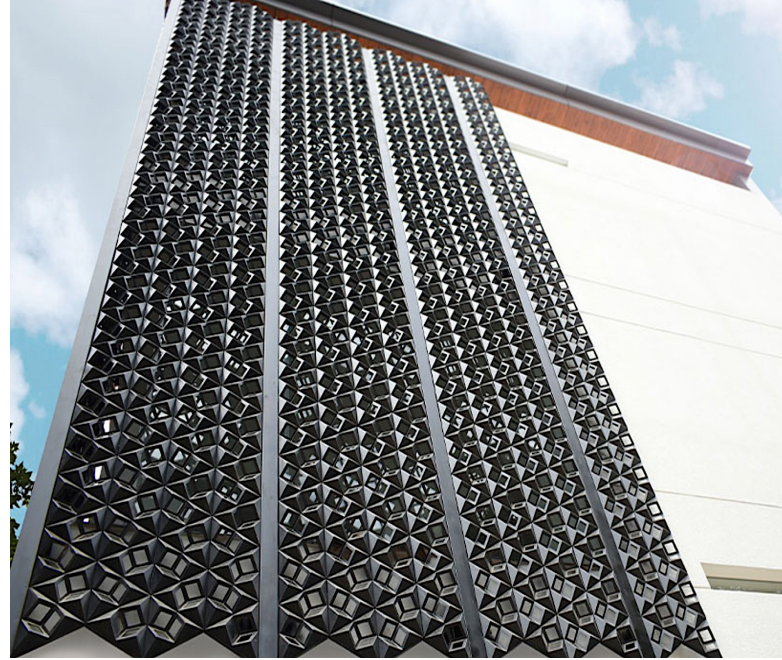
Cast Aluminium

Mashrabiya is widely used in cities where the weather conditions are rough, letting the aluminium facades absorb the heat while allowing the cool air to breathe to inside the building through latticework. These facades are also used for the light to pass inside the building. Our aluminium facades set your building apart from the common civil structures.



KAPHS Architectural Screens Façade

Mashrabiya is widely used in cities where the weather conditions are rough, letting the aluminium facades absorb the heat while allowing the cool air to breathe to inside the building through latticework. These facades are also used for the light to pass inside the building. Our aluminium facades set your building apart from the common civil structures.

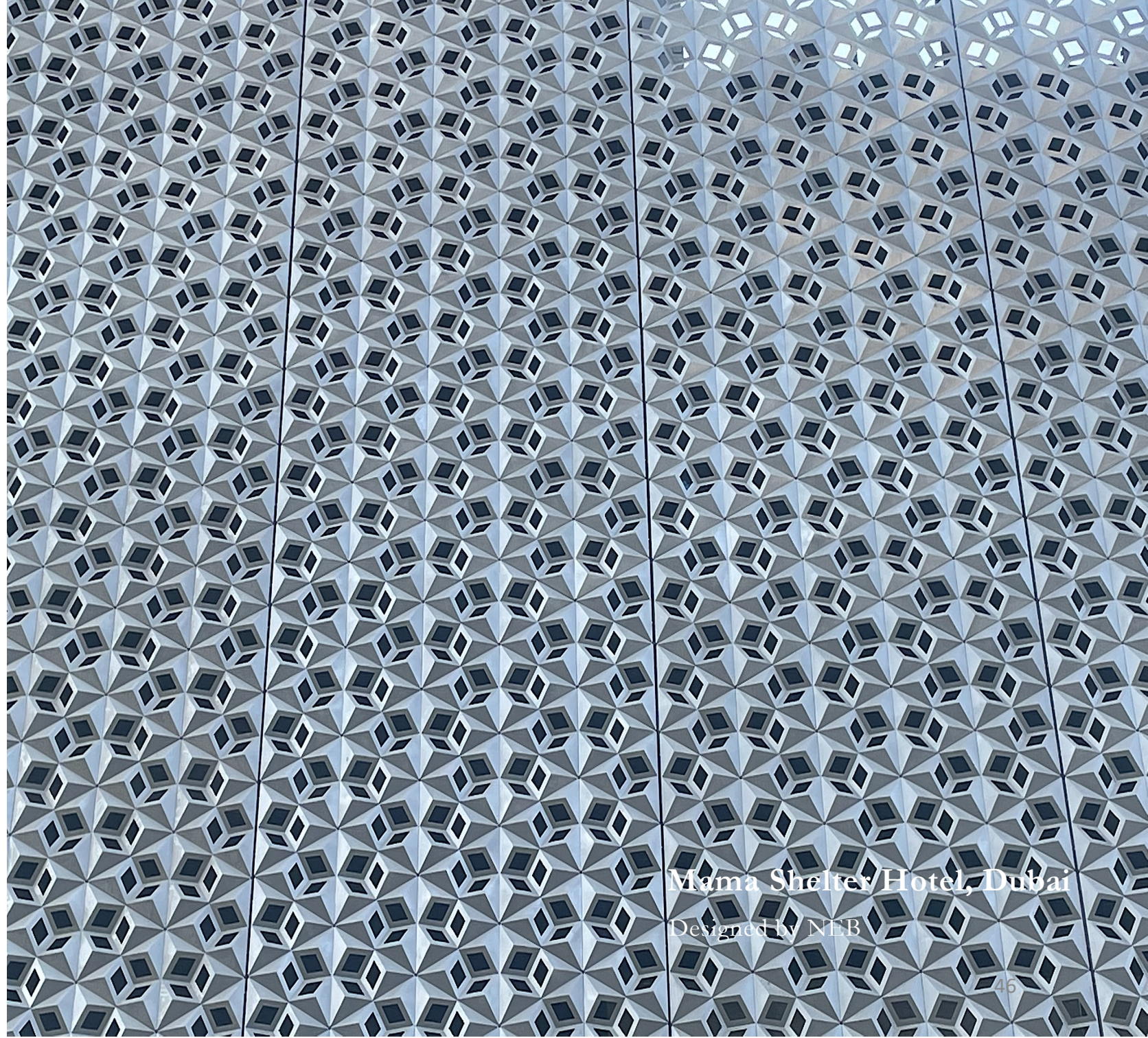
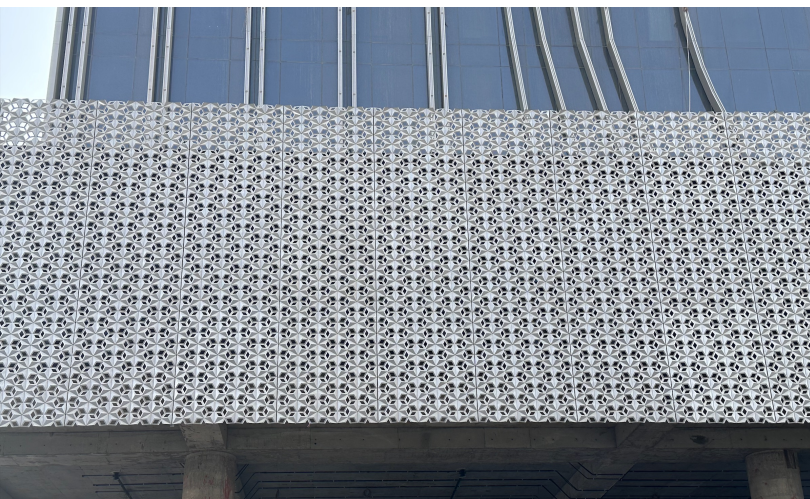


KAPHS Architectural Screens

Privacy Screens

Mashrabiya is widely used in cities where the weather conditions are rough, letting the aluminium facades absorb the heat while allowing the cool air to breathe to inside the building through latticework. These facades are also used for the light to pass inside the building. Our aluminium facades set your building apart from the common civil structures.





Mama Shelter Hotel, Dubai
Designed by NEB

A large, vertical, textured background on the left side of the slide, resembling a fine mesh or woven fabric, with a gradient from dark to light.

Alumet

A KAPHS Partner

ALUMET

PANELOX is a special anodizing technique and exists, unlike most common techniques, made of two anodized layers: matte and gloss shades and an etched design. This is a unique element of PANELOX and therefore offers many possibilities. You can combine one or two colours with a design. PANELOX gives a panel an impressive appearance!

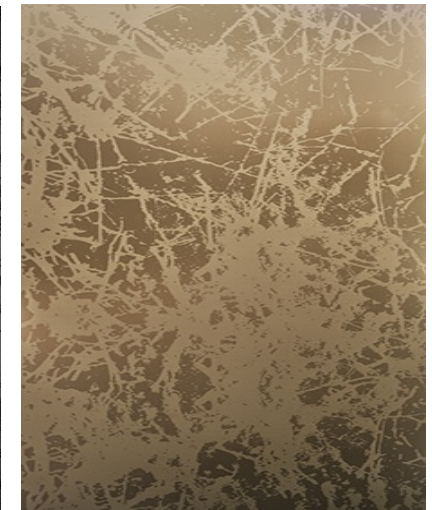
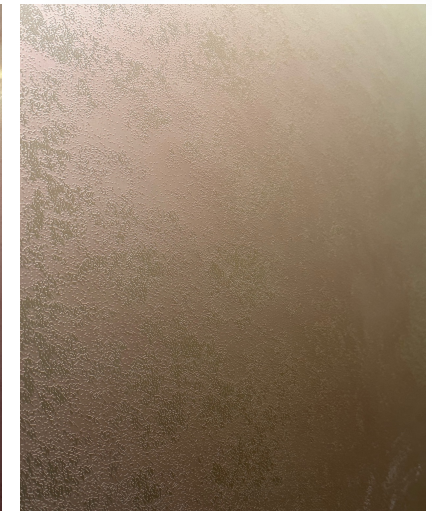
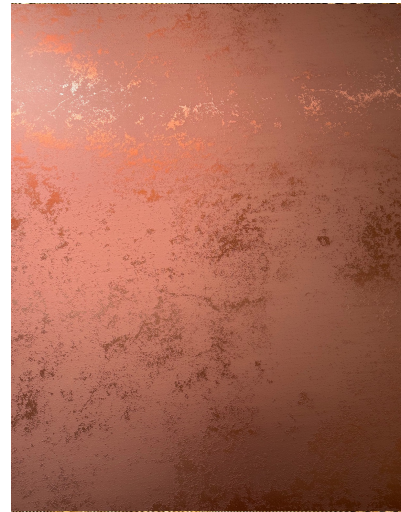
Panelox

Pattern Options

Panelox panels have two anodized layers: one gloss and one matte.

We have developed six patterns for inspiration: Stone, Rust, Frozen, Zinc, Flower and Fiber.

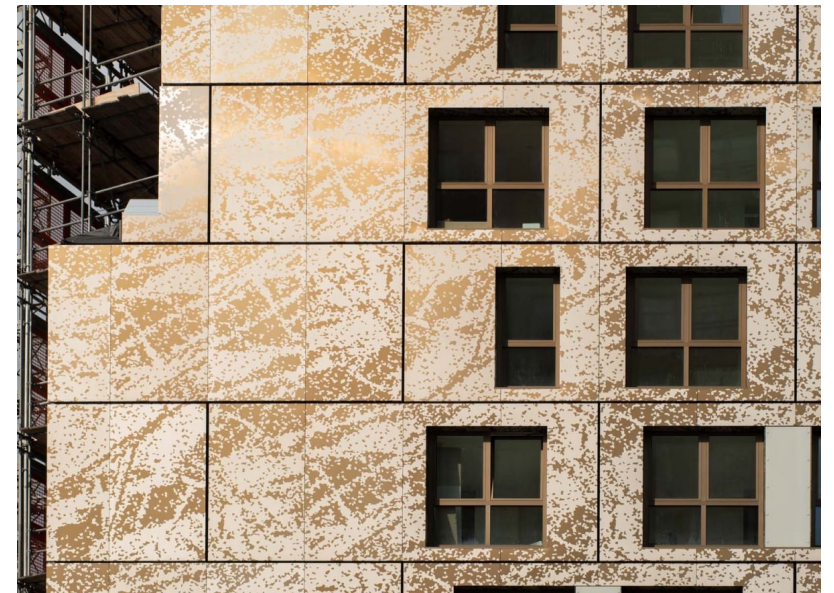
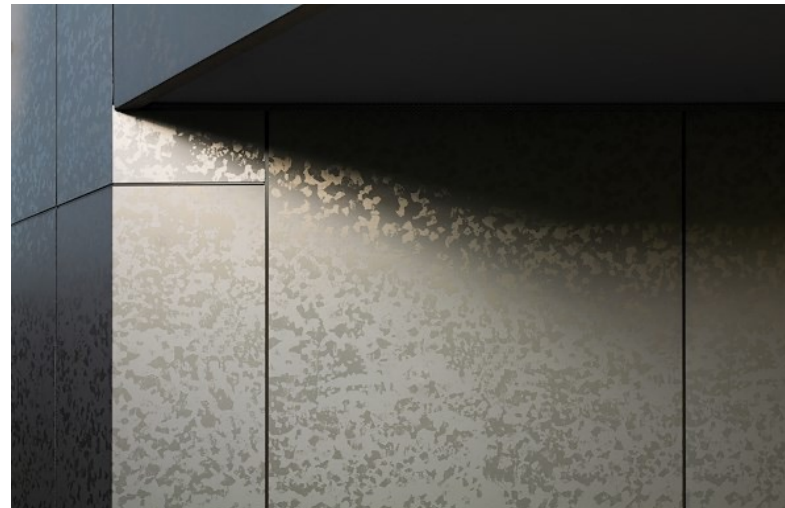
We etch the designs into the panels using a special procedure. This ensures a beautiful and lively panel. From afar, the shiny parts light up in the sun, giving you a small 3D effect.



Panelox

Façade

The panels are available with a thickness of 1, 2 or 3 mm. Our Panelox technique can also be applied very well to composite panels. These can be set after anodization without damaging the anodization layer.

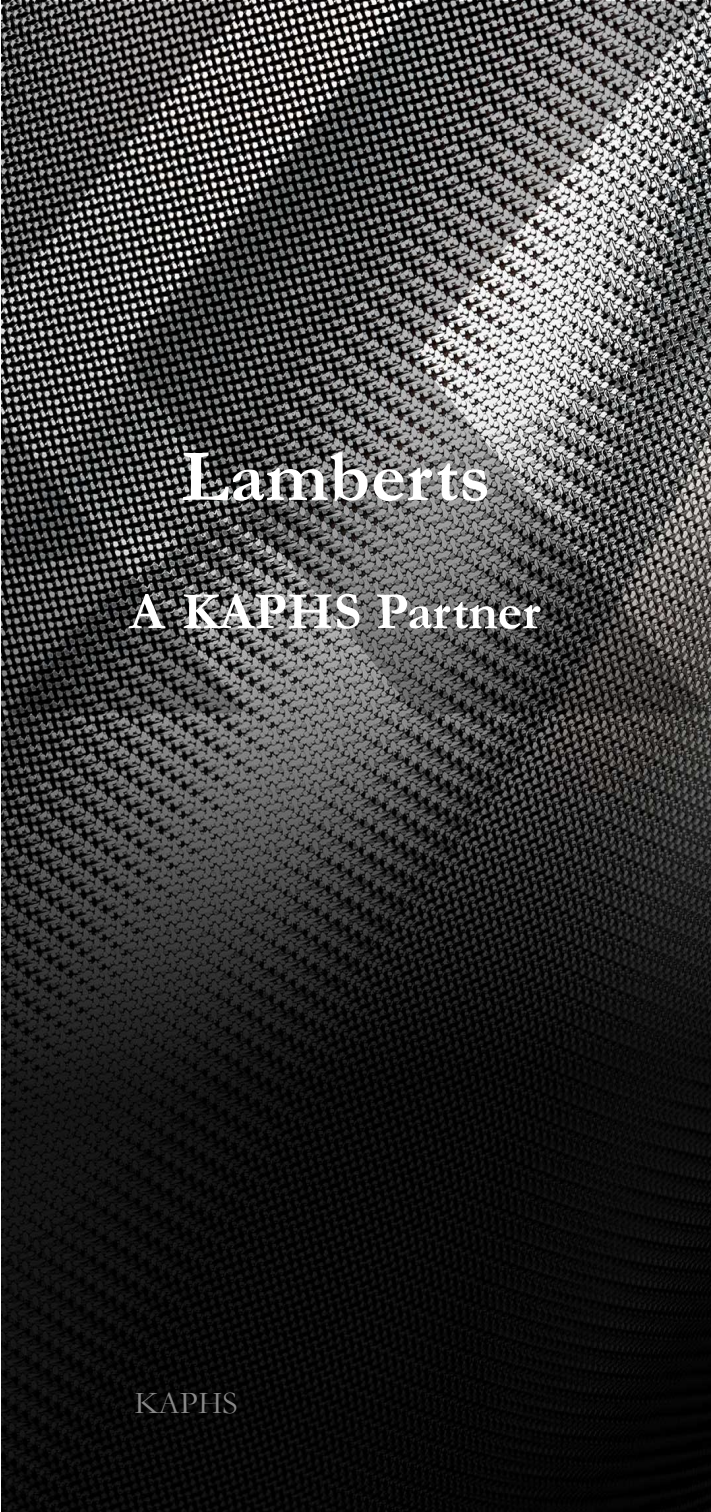




Oman Across Ages Museum

Designed by Cox Architecture





Lamberts

A KAPHS Partner

LAMBERTS

The Linit U-Profiled Glass provides architects and interior designers the opportunity to create an un-interrupted façade by using only top and bottom profiles. Depending on wind loads and glass type, the maximum height/length can be up to 7 meters. Linit U-Profiled Glass can be combined with curtain wall façade to create special features on a building or stand alone.

Lamberts

Pattern Options

LINIT clarissimo is a production-technical enhancement of LINIT clear.

LINIT solar is characterized by a silky-smooth surface which not only allows ideal energy gain but also meets highest aesthetic

This high claim to design can also be met by the new LINIT cord. The very fine, line-shaped surface also impresses with extraordinary elegance.

LINIT ice is a new surface structure accentuating the natural, elemental character of glass and recreates the aesthetic of ice, particularly when the glass is dulled on the inside.

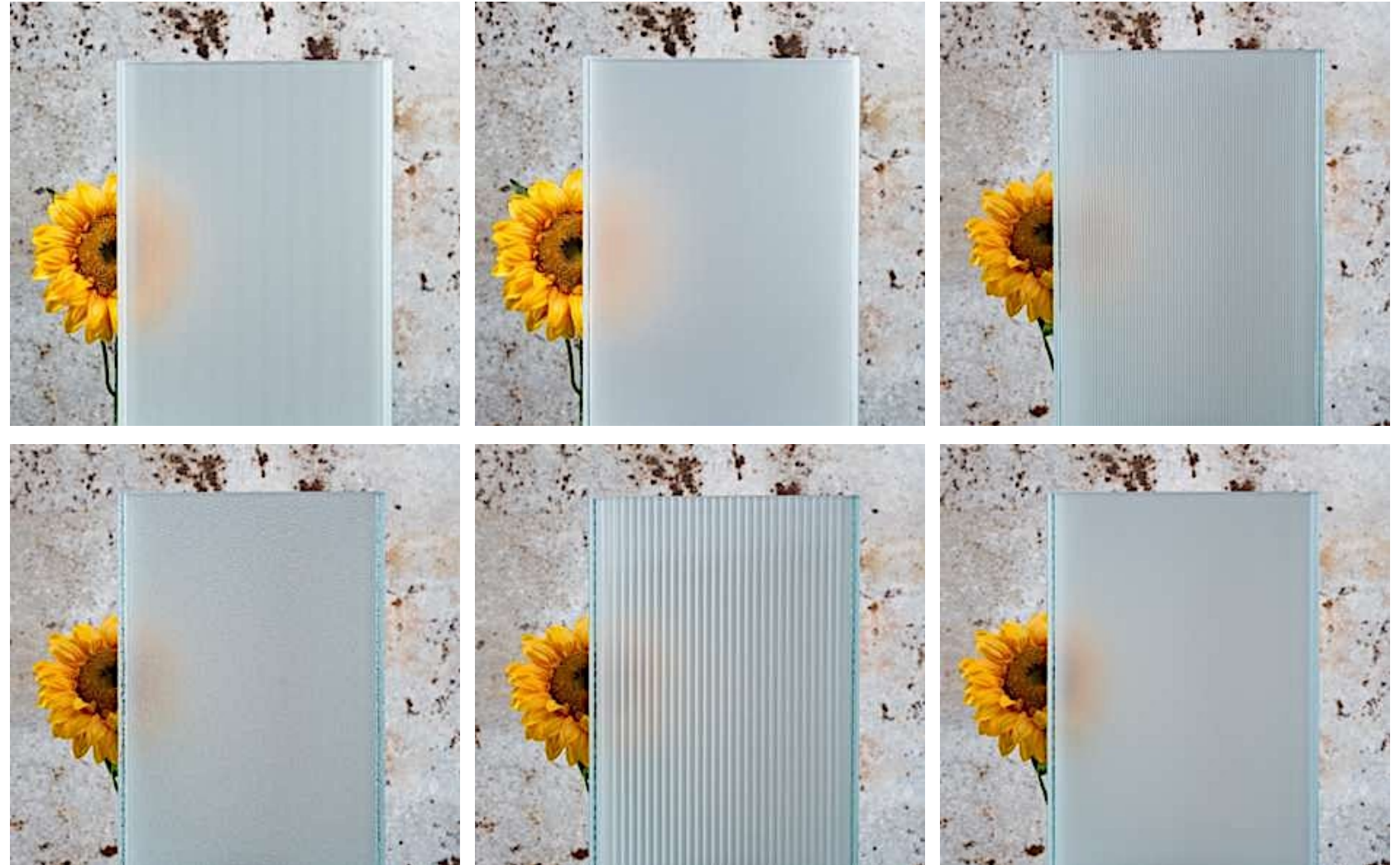
KAPHS



Lamberts

Matt

LINTT matt is a U-profiled glass with a sandblasted inner surface refracting and diffusing the light completely. As a result, you can no longer see clear outlines (in contrast to directed permeability). This creates a soft, whitish hue making the LINTT facade more attractive and providing an additional lightness at comparatively low costs – especially when the glass facade is backlit.



Lamberts Ceramic Colour

By burning ceramic colours into the inside of the glass the designer is able to create LINIT facades in a variety of RAL-colours (from white via orange through to black) with more or less translucency, depending on the colour. For planners and constructors preferring the whitish colour of so-called etched / frosted glass we have a special type of LINIT colour available, that is emulating the appearance of etched glass on the basis of ceramic colours.



Lamberts

Facade Application

By contrast to flat panes of glass and due to its U-shape, LINIT channel shaped glass has excellent load-bearing capacities and can therefore be installed in very considerable lengths (up to 7m depending on wind load/stress) without any intermediate support. LINIT U-Profiled Glass has such high static strength that side braces can usually be avoided. The result is a façade which provides a maximum of glass and a minimum of frame profile.



Lamberts

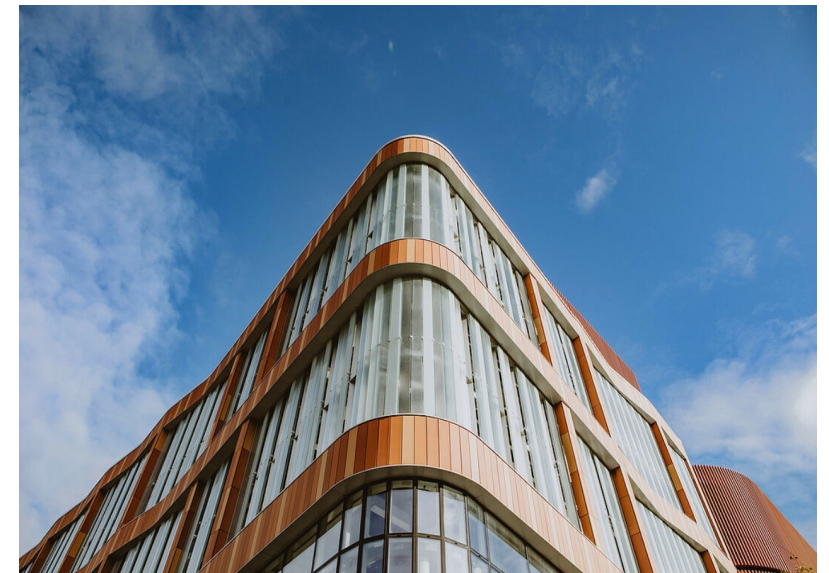
Internal Application

By contrast to flat panes of glass and due to its U-shape, LINIT channel shaped glass has excellent load-bearing capacities and can therefore be installed in very considerable lengths (up to 7m depending on wind load/stress) without any intermediate support. LINIT U-Profiled Glass has such high static strength that side braces can usually be avoided. The result is a façade which provides a maximum of glass and a minimum of frame profile.



Lamberts Car Park

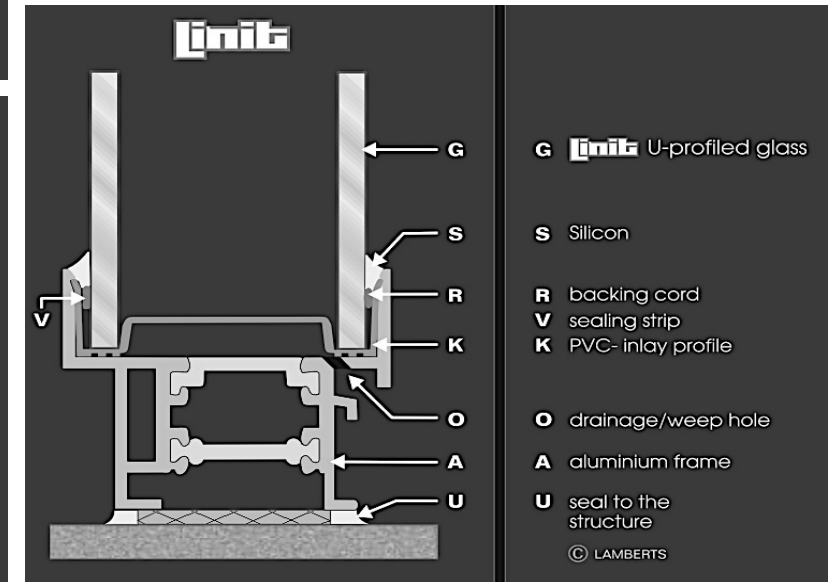
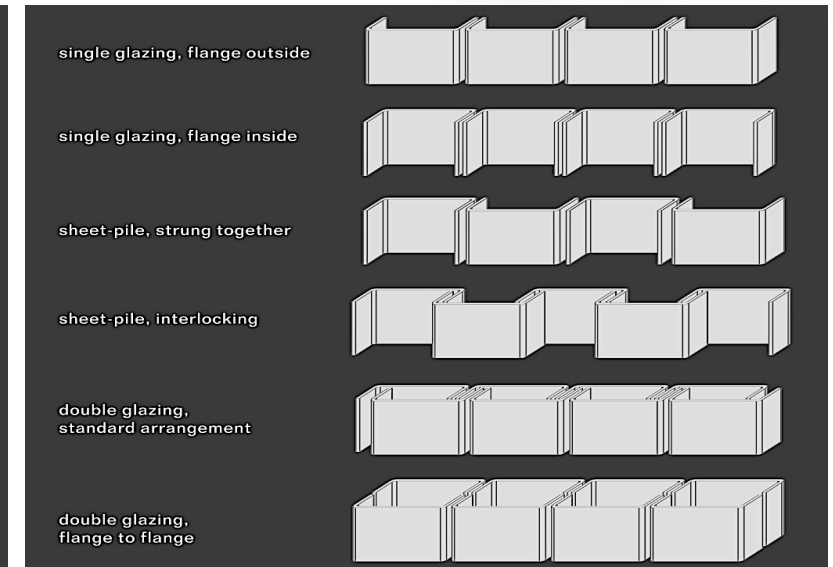
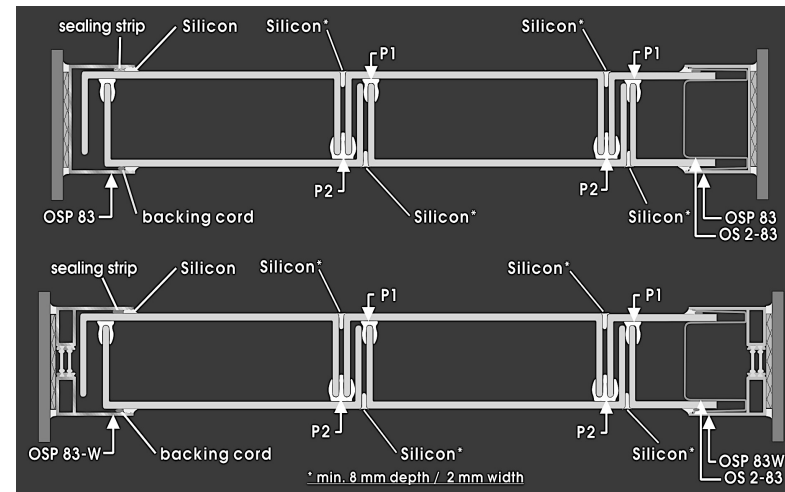
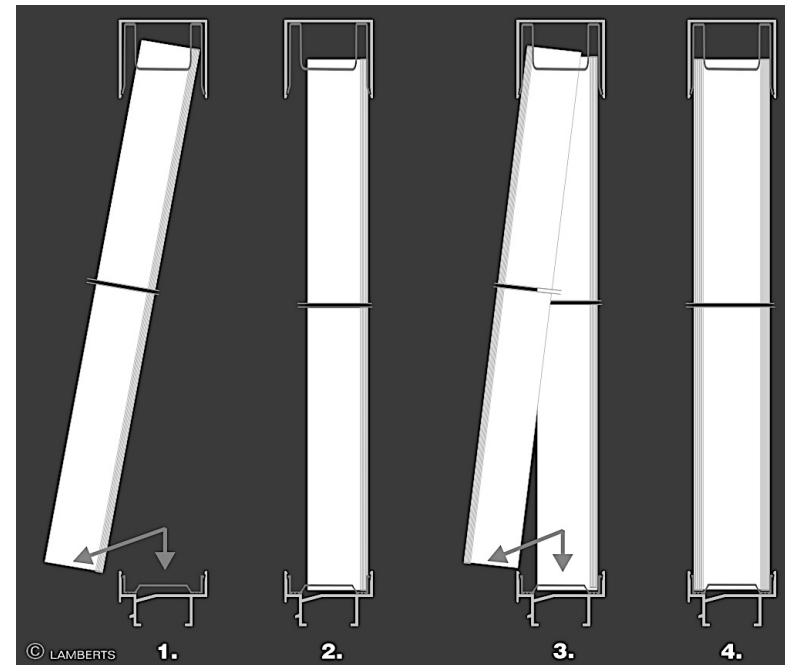
By contrast to flat panes of glass and due to its U-shape, LINIT channel shaped glass has excellent load-bearing capacities and can therefore be installed in very considerable lengths (up to 7m depending on wind load/stress) without any intermediate support. LINIT U-Profiled Glass has such high static strength that side braces can usually be avoided. The result is a façade which provides a maximum of glass and a minimum of frame profile.



Lamberts Glass To Profile Details

There are also special profiles available for special glazing, e.g. such as push-in system, shed roof glazing, horizontal glazing and round glazing. In principle, in the case of special structures and a certain level of requirement, it is also possible to develop new profiles – if the schedule and budget allow.

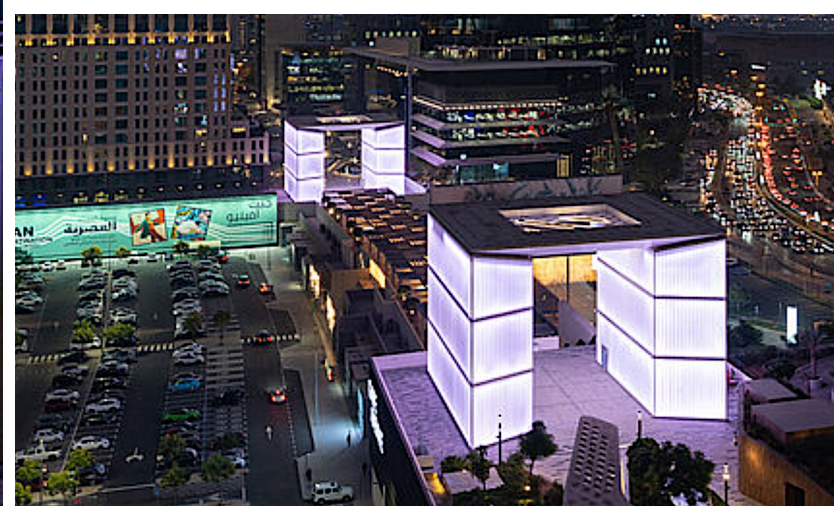
All profiles can be produced in plain-pressed, anodised and RAL powder coated design. It is also possible to produce special colours, on request. The guarantee is in accordance with the manufacturer's specifications.

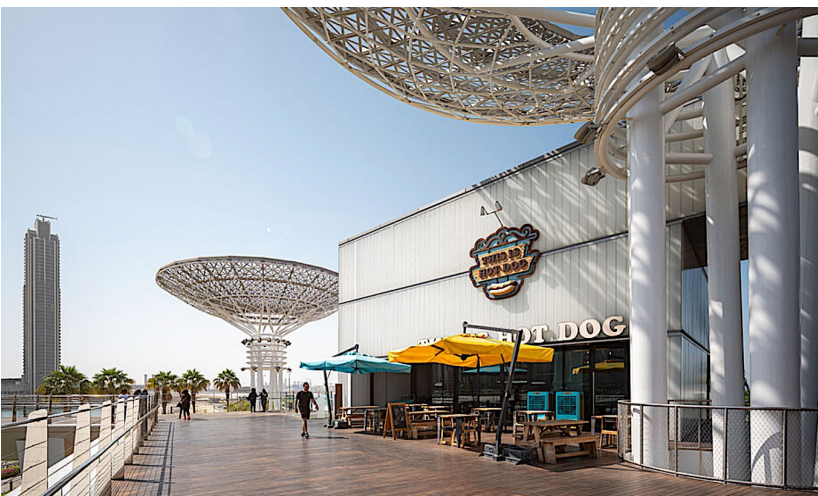




DIFC Gate Avenue, Dubai

Designed by RMJM





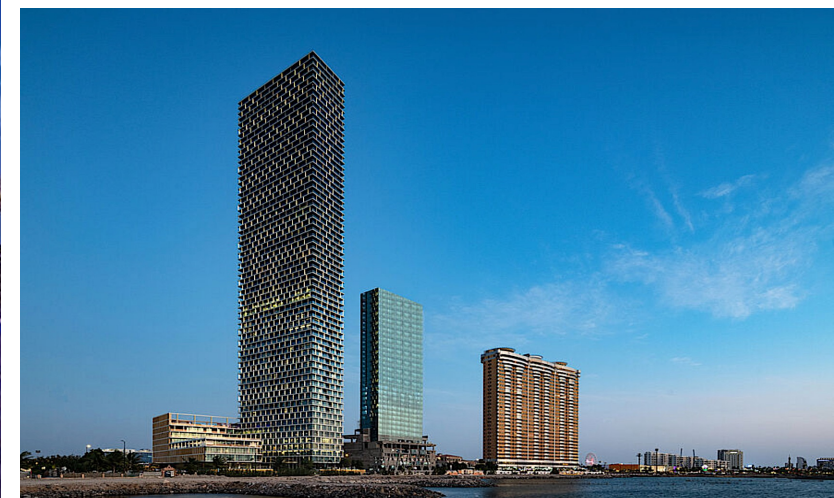
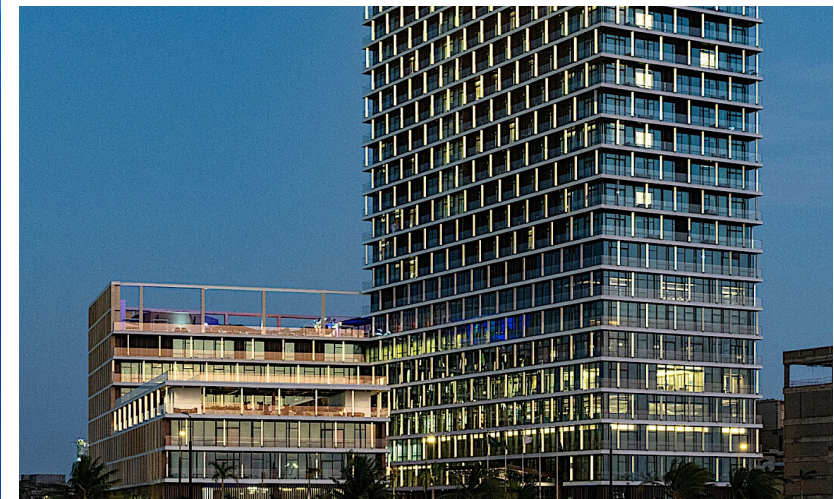
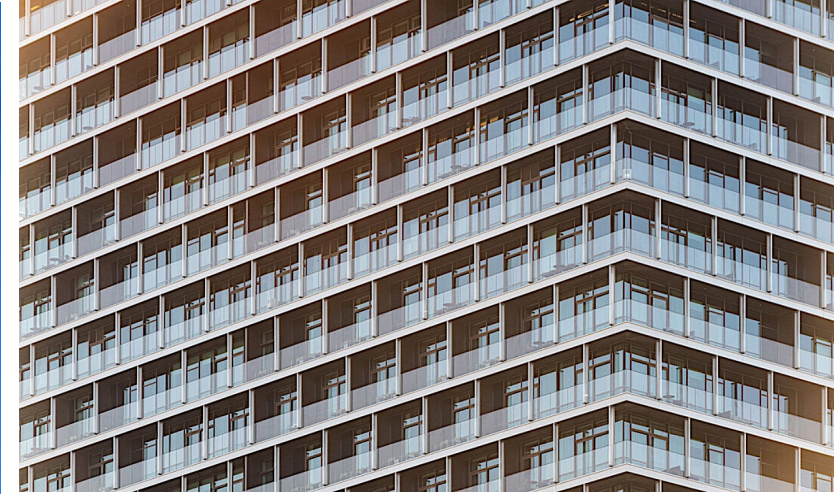
Bluewaters Island, Dubai

Designed by Woods Bagot



Shangri-La Hotel, Jeddah

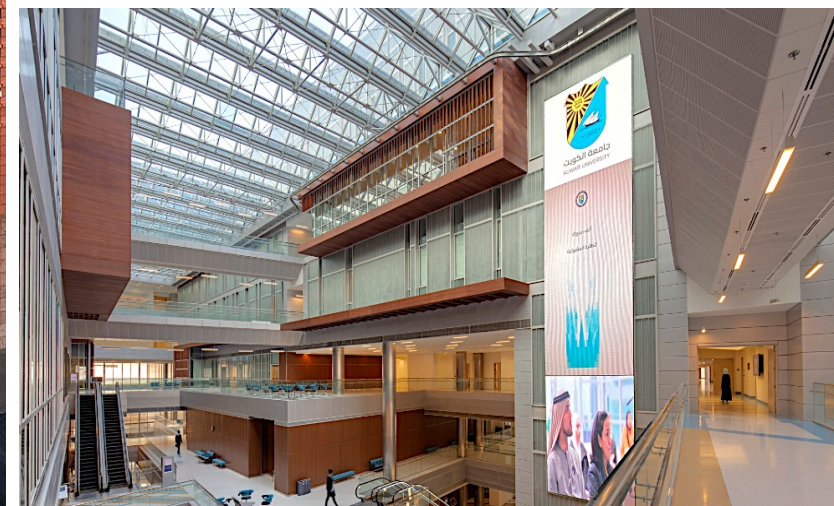
Designed by Perkins Eastman





College of Engineering & Petroleum, Kuwait

Designed by Gulf Consult





Cleveland Clinic, Abu Dhabi
Designed by HDR



Adidas Flagship Store, Dubai
Designed by Adidas





Adidas Store Avenues Mall, Kuwait
Designed by Adidas

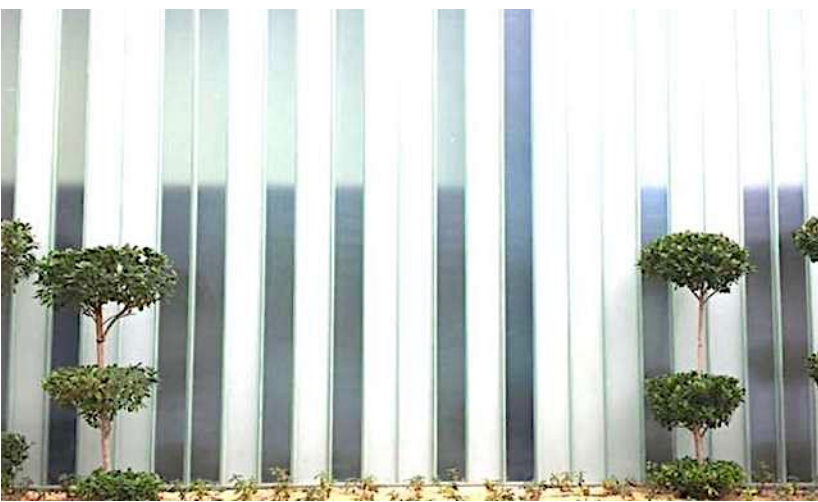


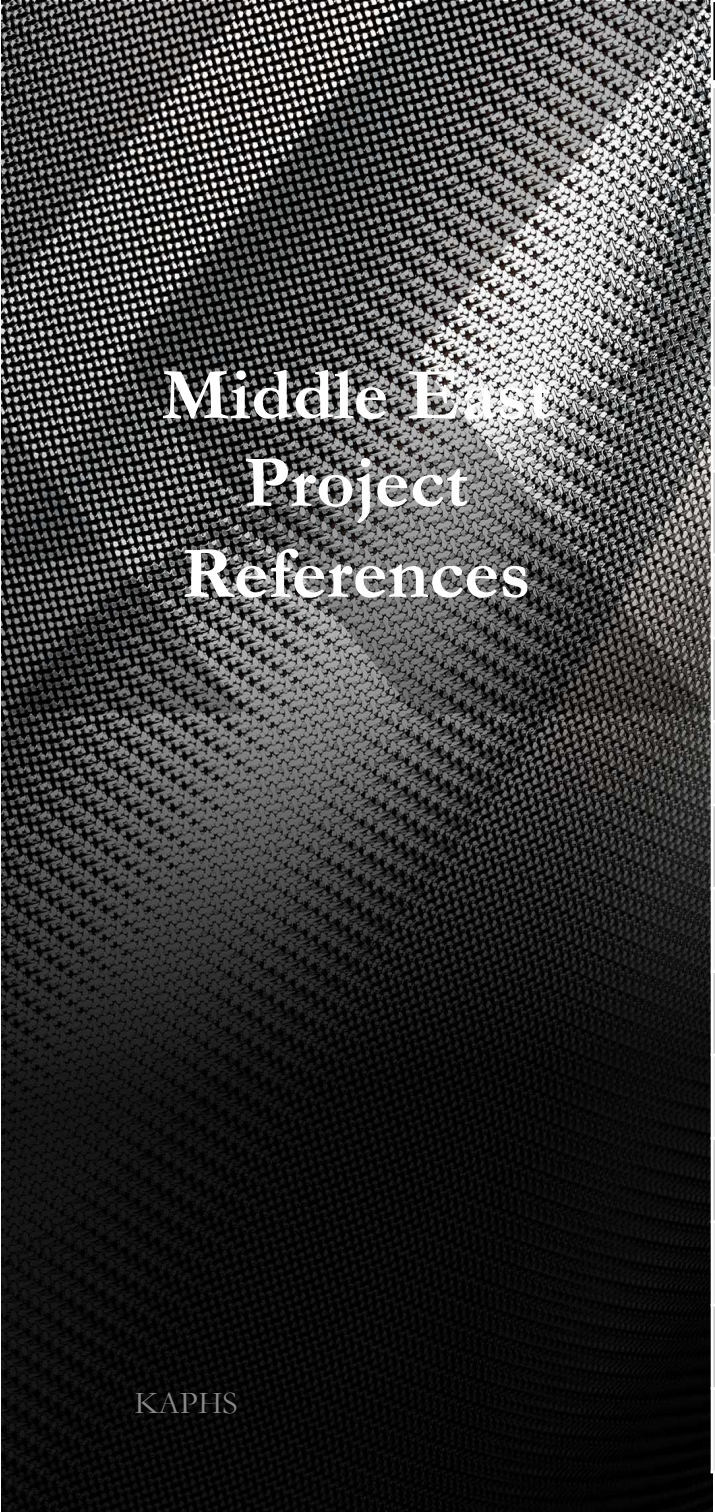


Arzanah Medical Complex, Dubai

Designed by WSP







Middle East Project References

KAPHS

PROJECT	LOCATION	CONSULTANT	SQM AREA	APPLICATION
College Of Engineering	Kuwait	Gulf Consult	37'000 SQM	Facade, Internal
Cleveland Clinic	Abu Dhabi, UAE	HDR	19'000 SQM	Facade, Internal
Arzanah Medical Comlex	Abu Dhabi, UAE	WSP	2'000 SQM	Facade
JBR The Beach	Dubai, UAE	BSBG	1'000 SQM	Facade
DIFC Gate Avenue	Dubai, UAE	RMJM	15'000 SQM	Facade
KITC	Kuwait	PACE	3'800 SQM	Facade
Sidra Medical Complex	Qatar	Atkins	1'610 SQM	Ventilated Car Park
Adidas Avenues Mall	Kuwait	Adidas	478 SQM	Internal
Adidas Dubai Mall	Dubai, UAE	Adidas	360 SQM	Internal
Oman Convention	Oman	SSH International	1'000 SQM	Internal
Dow Kaust	Jeddah, KSA	Hopkins	3'000 SQM	Facade, Internal
Bluewaters Commercial	Dubai, UAE	Woods Bagot	3'000 SQM	Facade
BMW Motor City	Dubai, UAE	Archcorp	752 SQM	Facade
BMW Sheikh Zayed	Dubai, UAE	ATI	459 SQM	Facade
Shangri-La Hotel	Jeddah, KSA	Perkins + Will	3'800 SQM	Building Fins
Sabic Headquarter	Jubail, KSA	Henning Larsen	6'500 SQM	Facade

Lumière High Performance Glass

A KAPHS Brand



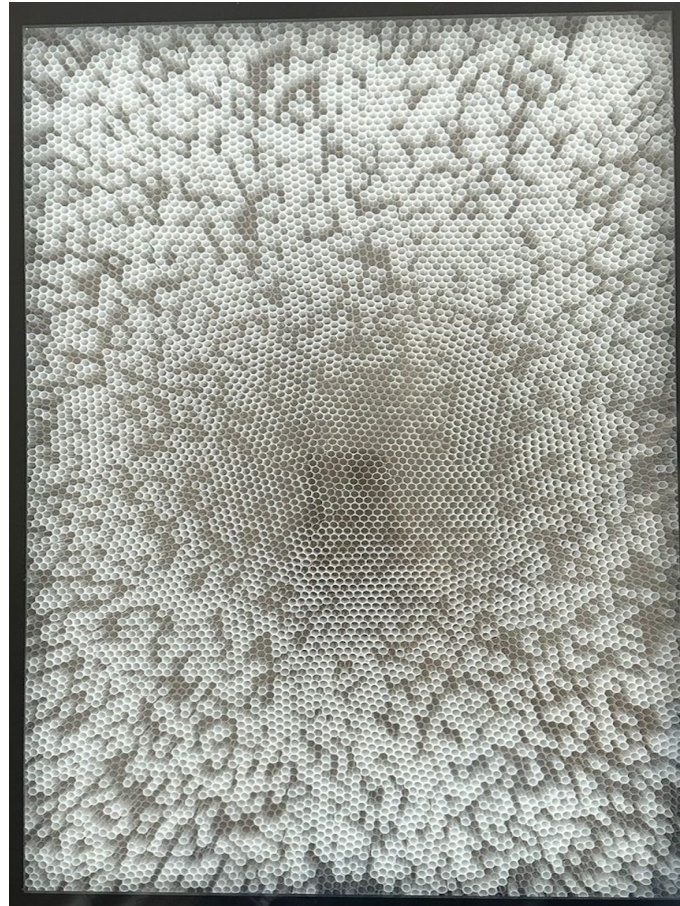
Lumière High Performance Glass is a glazing product that allows natural light into a building while providing a high degree of thermal insulation. Double Glazed units are made using UV stabilized, multicell polymer infills in glass to redirect and allow natural lighting in buildings. The filtered light allows for a substantial reduction in heat transmitted into the building, resulting in comfortable and energy-effective interiors.

Lumière High Performance Glass has three categories,
Honeycomb Diffusers, Woven Wire Mesh & Expanded Mesh.

Lumière High Performance Glass

Honeycomb Glass

- Optimal, even illumination of the room, without hard shadows
- Effective sun and glare protection
- High light transmission, light entry can be adjusted individually
- High colour rendering
- Good heat and sound insulation
- Protection from UV rays
- Bird-friendly solution
- Fire protection according to requirements

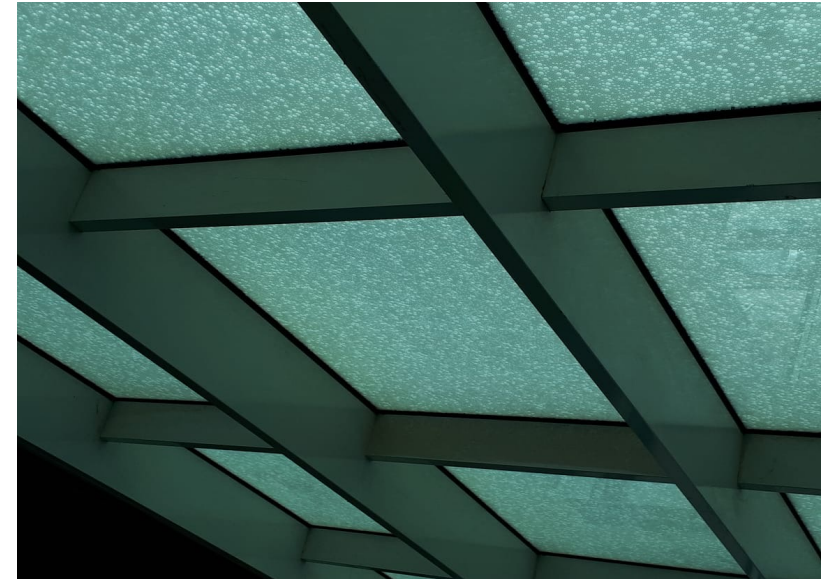
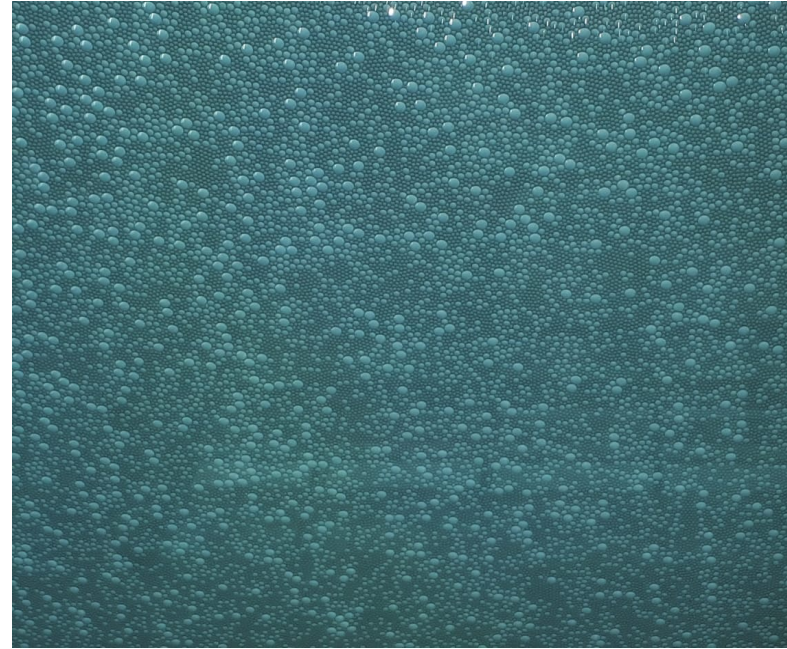


Lumière High Performance Glass

Skylight Application

The capillary slab in the cavity allows for an even and shadow-free illumination with daylight deep into the room. The sun and glare-protection are very good, the heat insulation excellent and the transmission values individually adjustable to the requirements.

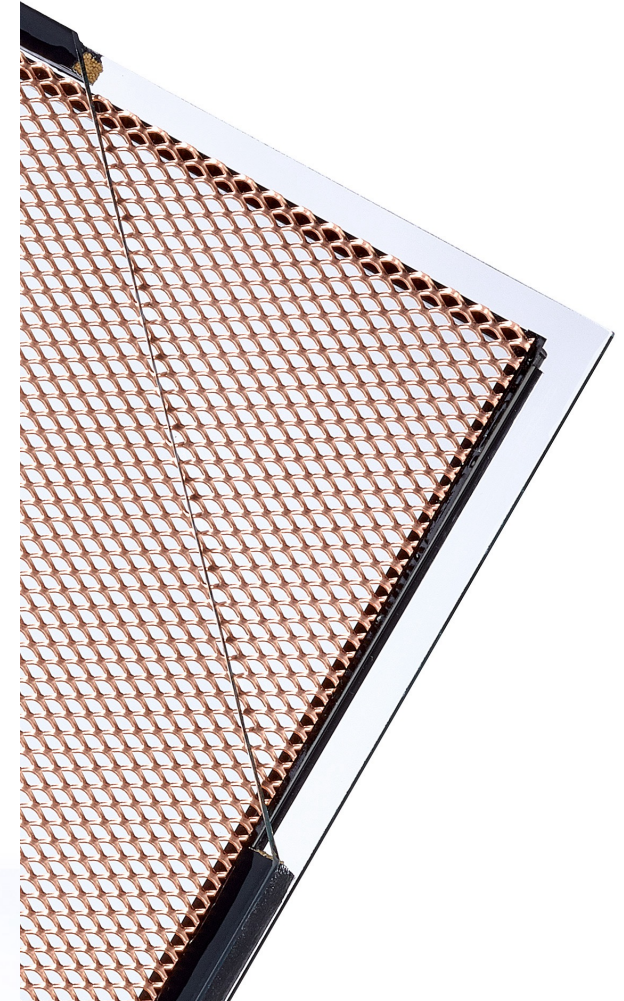
The fiber glass mat located only between the two capillary slabs is visible from both sides creates an attractive lively surface.



Lumière High Performance Glass

Expanded Mesh Glass

- The gleaming metal inlays give the facades a unique character and a special brilliance
- Different properties of the building shell
- Combination of various metals and coatings
- Variable geometry and dimension
- Sophisticated design solutions



Lumière High Performance Glass

Wire Mesh Glass

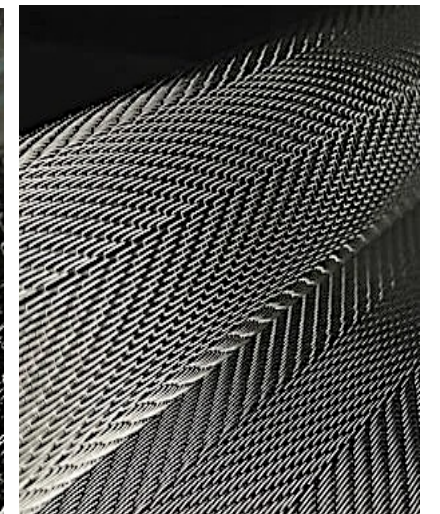
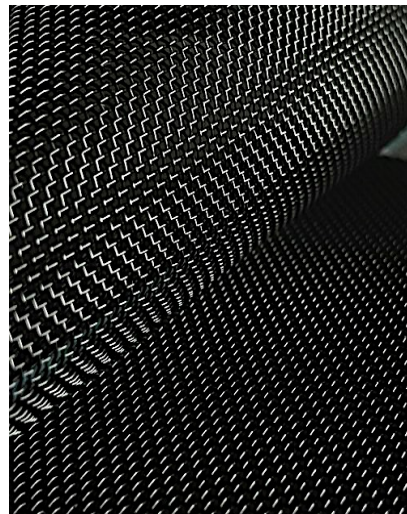
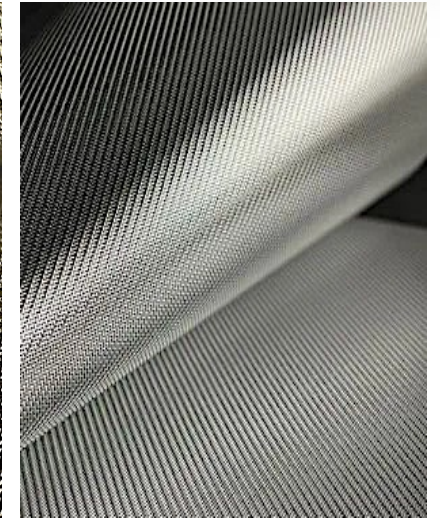
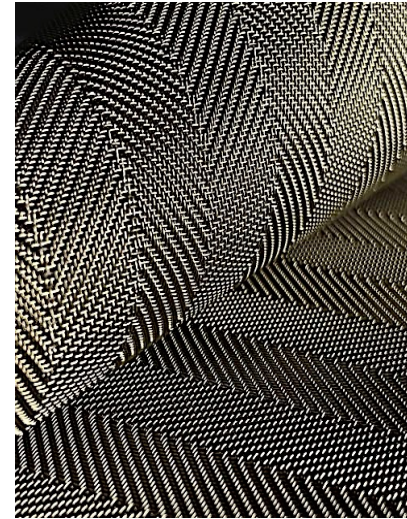
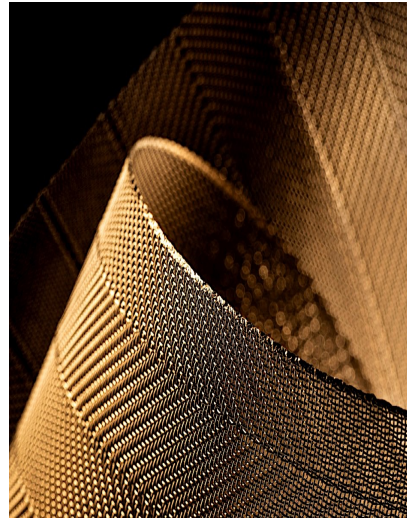
- The gleaming metal inlays give the facades a unique character and a special brilliance
- Different properties of the building shell
- Combination of various metals and coatings
- Variable geometry and dimension
- Sophisticated design solutions



Lumière Priva

Fabric Types

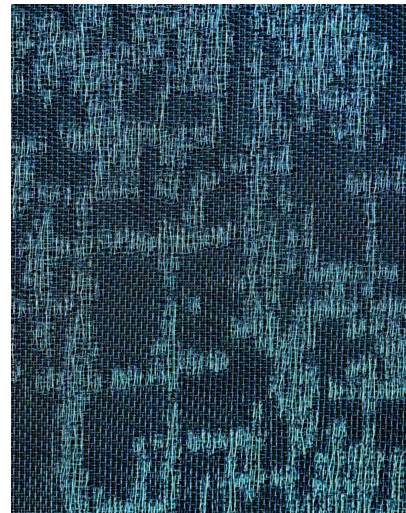
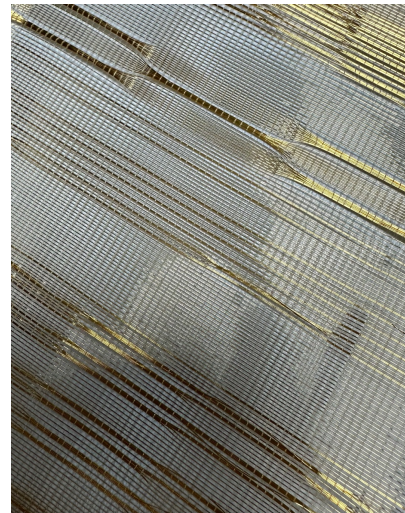
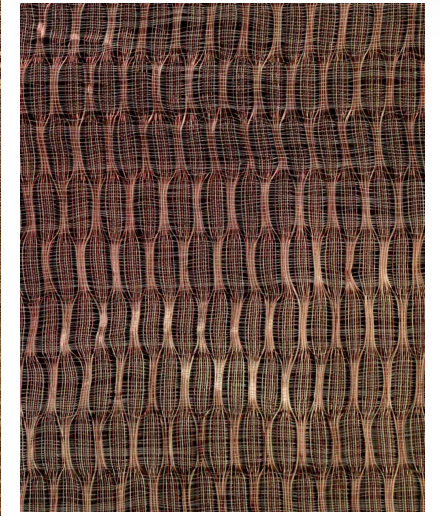
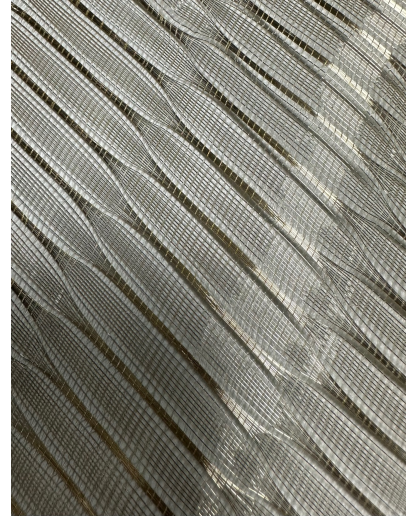
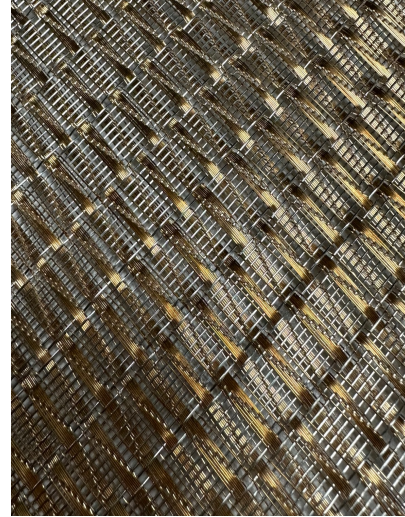
Metal coated precision woven mesh fabrics, glass lamination engineered fabrics, high compatibility with all interlayers, facade shading, light passages from 25% to 60%, thickness from 70 to 950 micron, heat and energy saving, high privacy levels, certified quality and safety, made in Italy, recyclable product, bird clashes prevention, endless customized solutions, design freedom, high aesthetic quality, high efficiency and technological solutions, technical and graphic support.



Lumière Privé

Metal Textiles

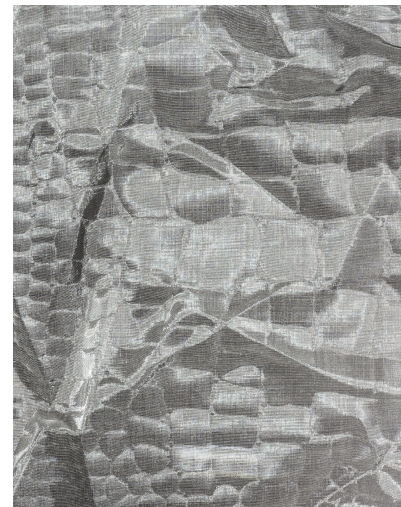
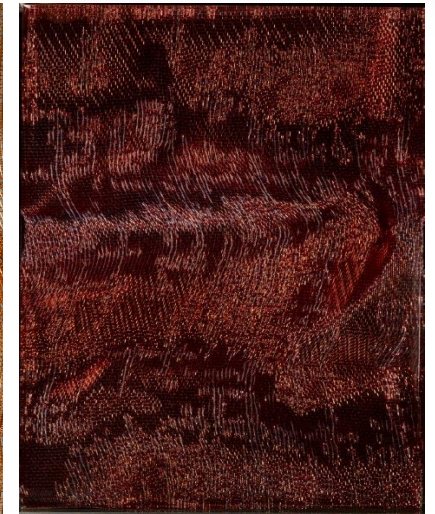
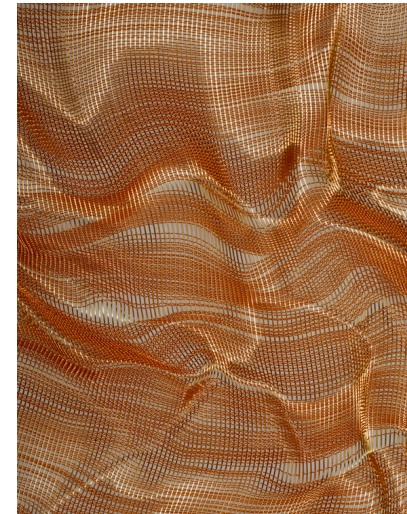
The collection shows the many potentials that can be created to create, upon customer request, all possible combinations of motifs, fibers, transparencies and colors. The fabrics are always fire resistant and use 100% recyclable copper yarn.



Lumière Priva

Acrylic Mesh

Acrylic glass — in a completely new light. A fascinating material with boundless opportunities! All of our meshes and inlays are captured inside the acrylic and float between the poles of visually-soft materiality and solid transparency. Benefit from these special properties for a surprisingly wide range of possible applications. Let yourself be inspired.. Through unique nanoparticles in the acrylic glass this extraordinary material composition makes it possible to achieve intensely radiant effects — especially in the presence of light and LED technology.



Lumière Priva

Acrylic Mesh

- Illuminated Counter Fronts in hospitality and restauration industry.
- Each panel is hand-made and unique, a precious piece of art, incomparable and stunningly beautiful.
- Experience the astonishing appeal and effect of depth which this catalogue is unfortunately only able to reproduce to a limited extent.



Lumière Priva

Acrylic Mesh

•Whether luxurious, mystical, refined, graceful or spectacular – through the interplay of the finest acrylic and exclusive, selected materials, designs are created of unprecedented appearance, depth and “magic”. The highlight for the senses is achieved through unique nanoparticles in the acrylic. In the presence of light and LED technology, this extraordinary material composition makes it possible to achieve intensely radiant effects and thereby create the perfect setting for shine & shimmer, light & shade, colours & shapes.



Lumière Priva

Acrylic Mesh

- Partitions in offices and on large conference tables in meeting areas and open plan offices
- Dividers in public agencies and institutions
- Partitions in shops, cafes, restaurants and hotels, waiting areas
- Hygiene protection in salons, cosmetic studios and physicians offices
- Protective shields in reception areas (banks, hospitals, etc.)



Lumière Priva

Acrylic Mesh

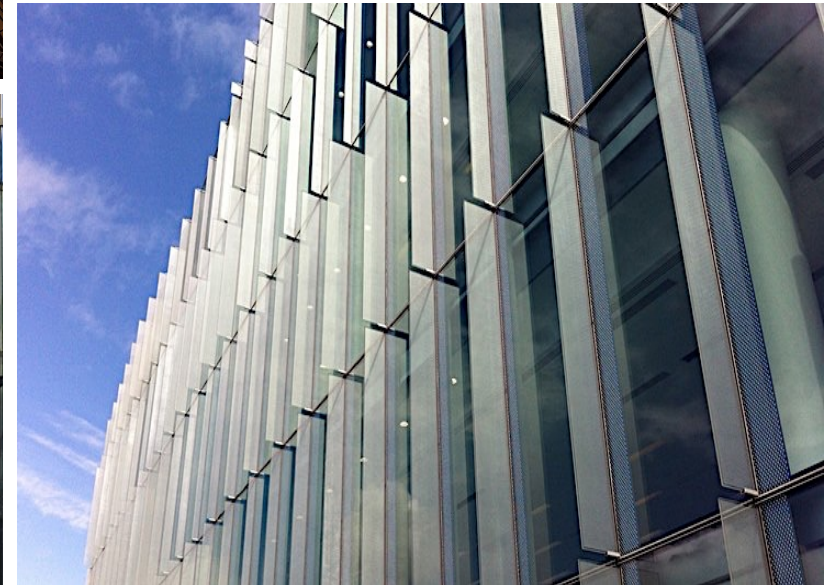
- 30-year guarantee on UV resistance / weathering
- 100-year guarantee based on very high molecular density against polymer degradation
- “Cross-linked” polymers for higher resistance to scratching and many chemical compared to conventional PMMA
- special nanoparticles for the extremely efficient scattering and reflection of light



Lumière Priva

Exterior Applications

- Facade
- Glass canopies
- Glass skylights
- Glass fins
- Glass louvers



Lumière Priva

Interior Applications

- Balustrades
- Privacy Sections
- Wall Panels & Claddings
- Glass Partitions



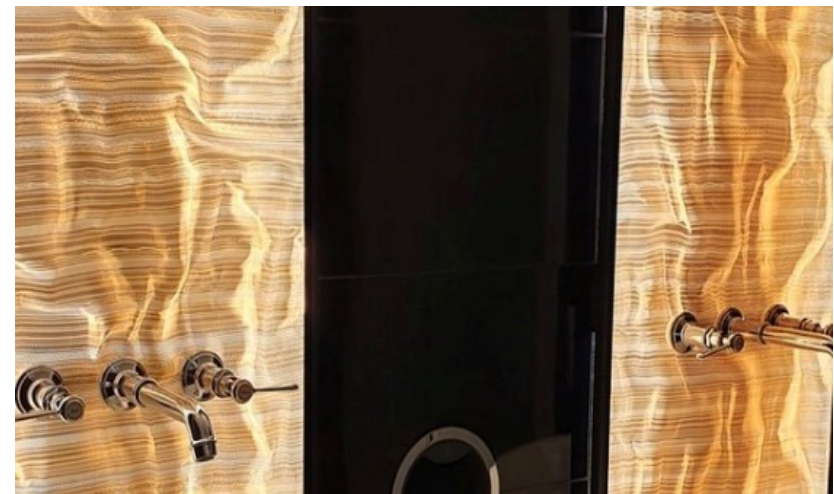


Movenpick Hotel Du Lac, Tunisia



Berlin Theatre

Designed by Susanne Kaiser





BMW Welt Munich Premium Lounge



KAPHS
MEETING EXPECTATIONS

Armani Club Privé, Milan

Designed by Armani Design

LISUS

A KAPHS Brand

LISUS®

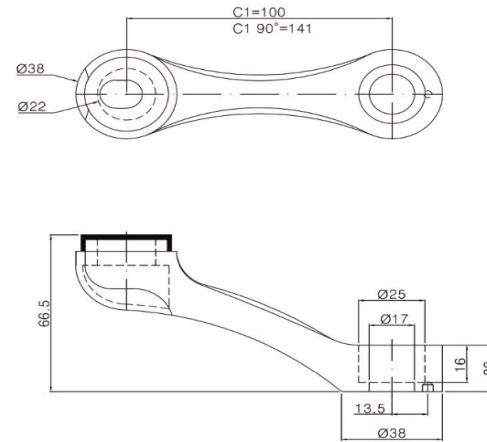
Acquired by KAPHS SA in 2016, LISUS has pioneered the design, engineering and manufacturing of Architectural Stainless-Steel Fittings for close to 40 years. LISUS provides a wide range of quality engineered frameless glass systems through the utilization of canopies, balustrades, facades, pool fences and sliding doors.

LISUS

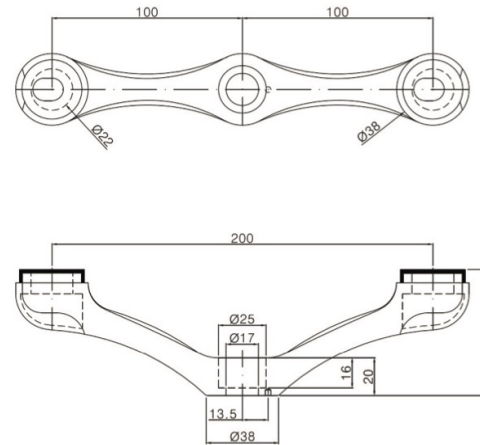
C-Series Spider Fittings

With utmost attention to design, the **C SERIES** Concealed Spider Fitting encompasses functionality while encapsulating elegance. Having spent more than three decades as innovators in this field, LISUS has developed a product which puts a refreshing spin on spider fittings for frameless glass facades and walls. Its luscious curves defy the standard design blueprints of a spider fitting while neatly concealing the bolts that hold the clamps in place.

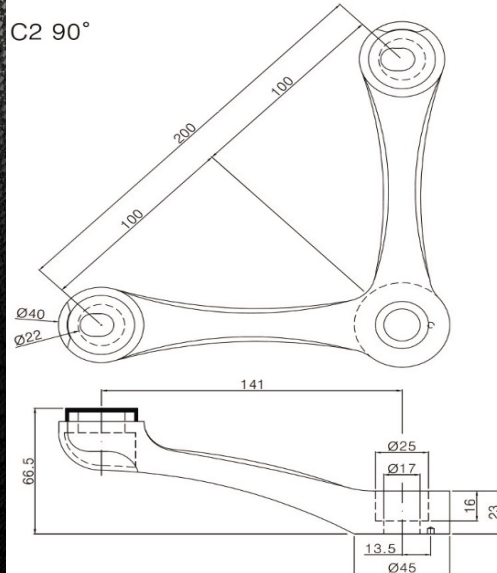
C1



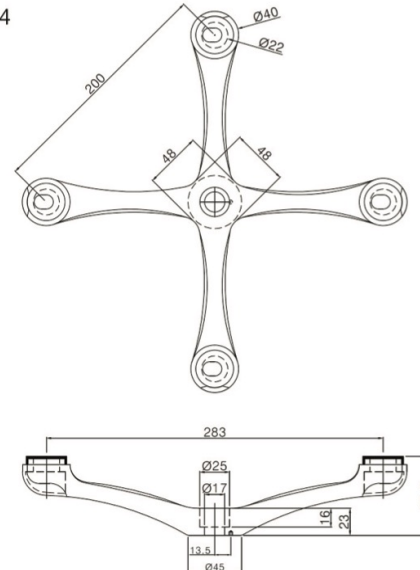
C2



C2 90°



C4

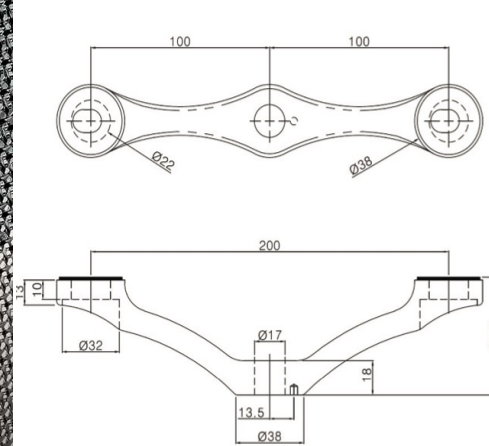


LISUS

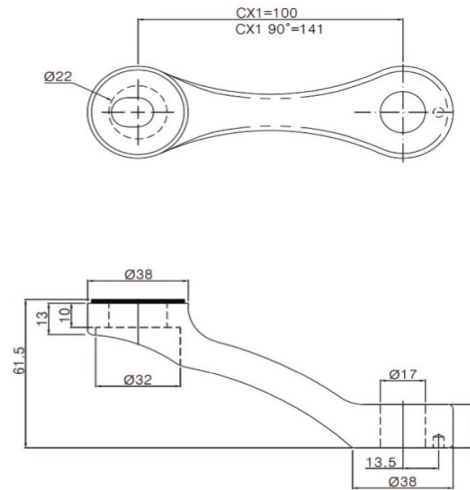
CX-Series Spider Fittings

With utmost attention to design, the **C SERIES** Concealed Spider Fitting encompasses functionality while encapsulating elegance. Having spent more than three decades as innovators in this field, LISUS has developed a product which puts a refreshing spin on spider fittings for frameless glass facades and walls. Its luscious curves defy the standard design blueprints of a spider fitting while neatly concealing the bolts that hold the clamps in place.

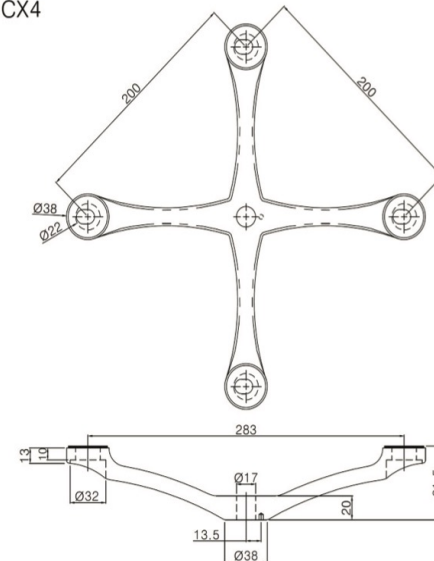
CX2



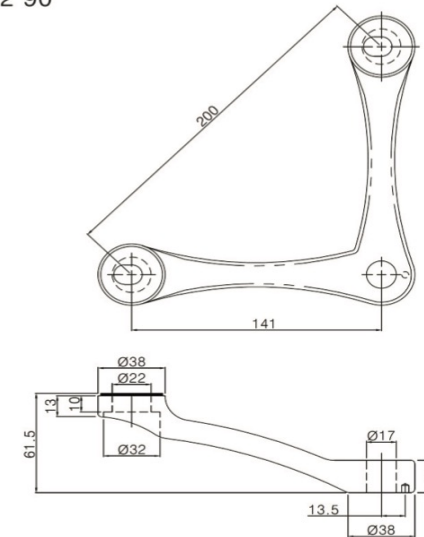
CX1



CX4



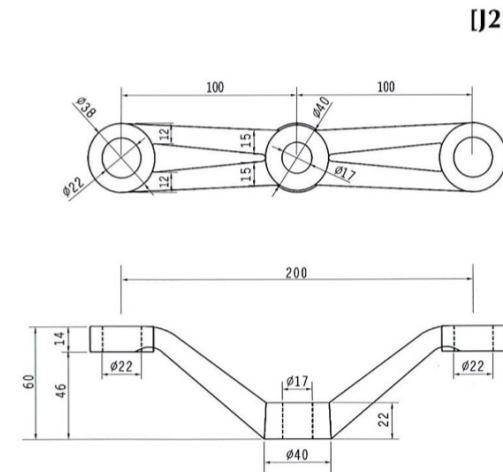
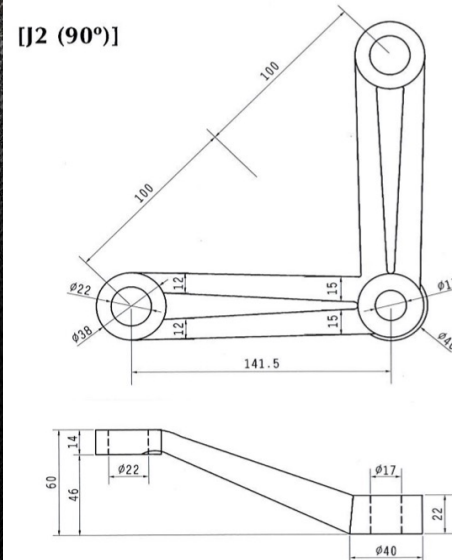
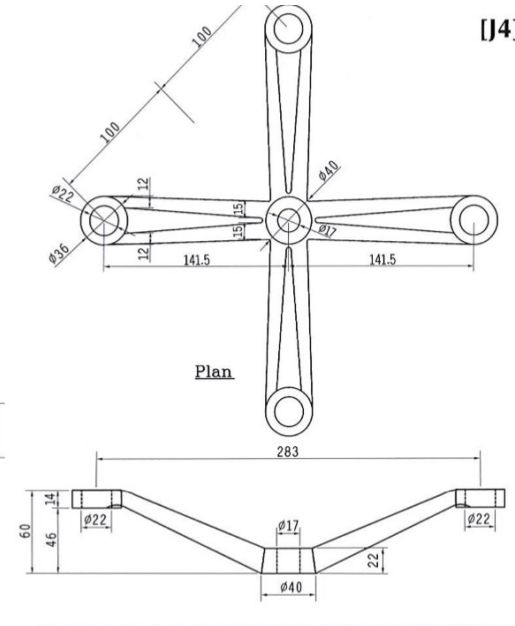
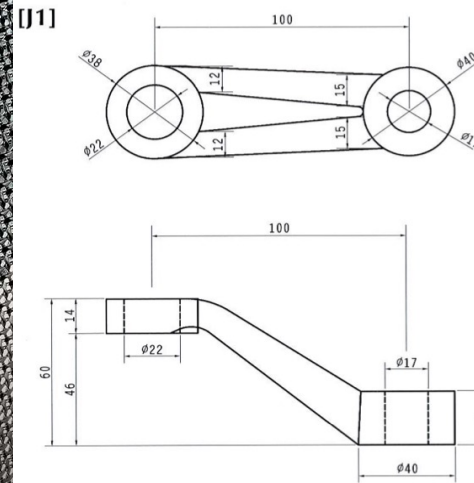
CX2 90°



LISUS

V-Series Spider Fittings

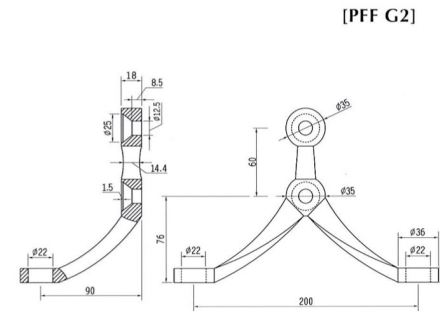
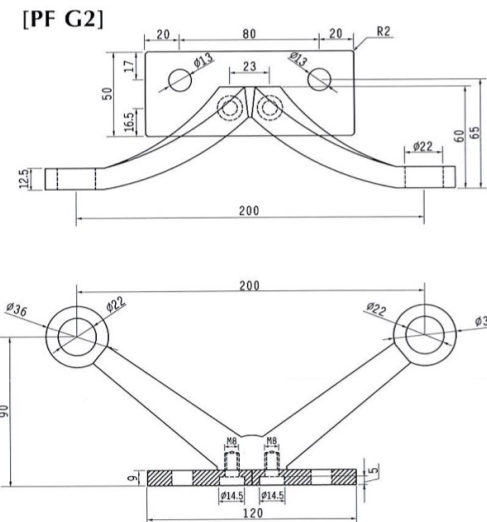
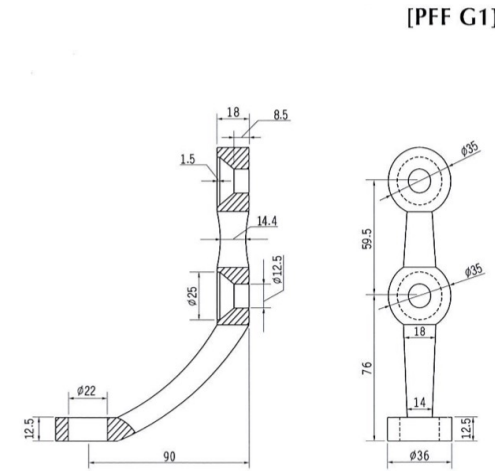
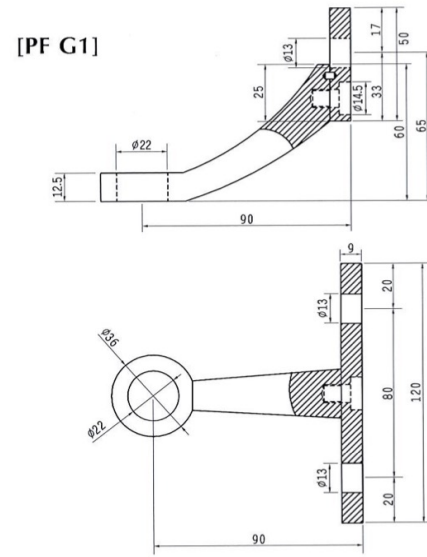
LISUS has developed a product which puts a refreshing spin on spider fittings for frameless glass facades and walls. Its luscious curves defy the standard design blueprints of a spider fitting while neatly concealing the bolts that hold the clamps in place.



LISUS

PFF-Series Spider Fittings

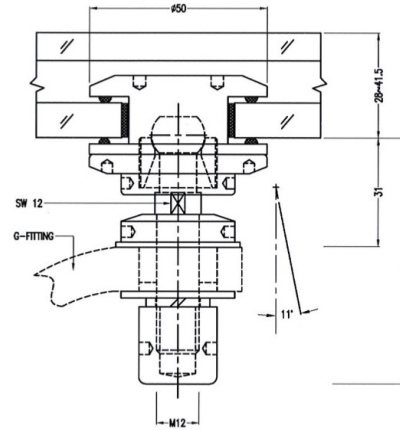
The main façade glass panels are suspended from a beam or slab by means of concealed clamps. Lateral support is provided by tempered glass fins of various design, thickness and configurations, independently clamped to the structure, while allowing for differential movement against the main glass facade. High span façade require the glass fin to be installed in sections held together by stainless steel splice joints.



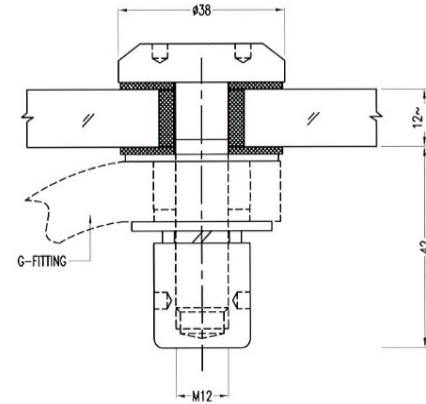
LISUS Bolts

Equipped with ten years of experience and hundreds of projects completed in many countries, it has provided Lisus with the ability to Design, Engineer and Manufacture a wide range of fittings, bolt assemblies and complete sets of components for glass fin, tension rod and cable structure facades.

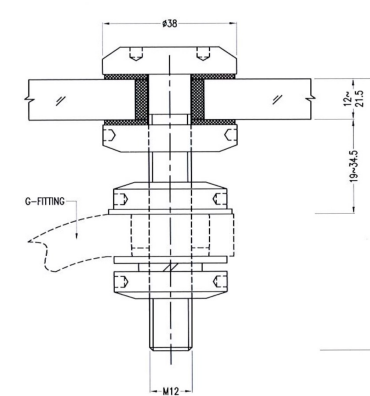
DG1 - AB - M12
[Double Glazed Articulated Bolt]



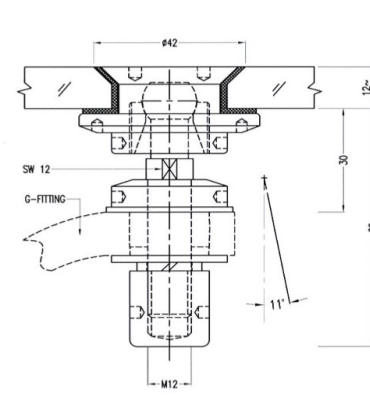
FHB - M12
[Flat Head Fixed Bolt Type1]



A - FHB - M12
[Adjustable Flat Head Bolt Type1]



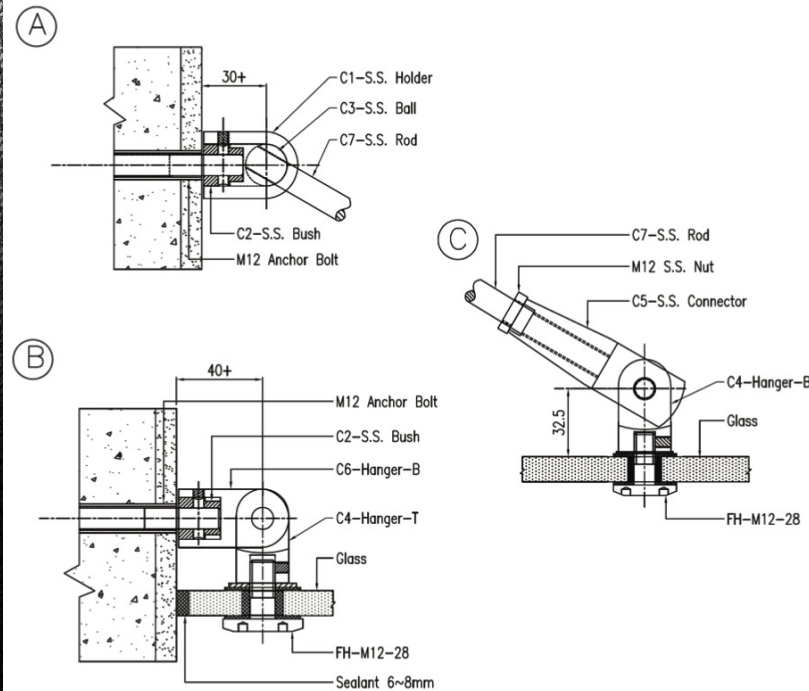
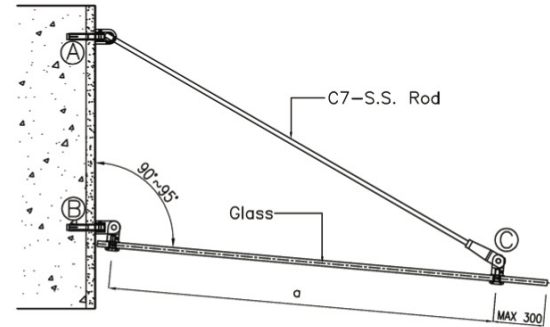
CS - AB - M12
[Countersunk Articulated Bolt]



LISUS

Single Canopy

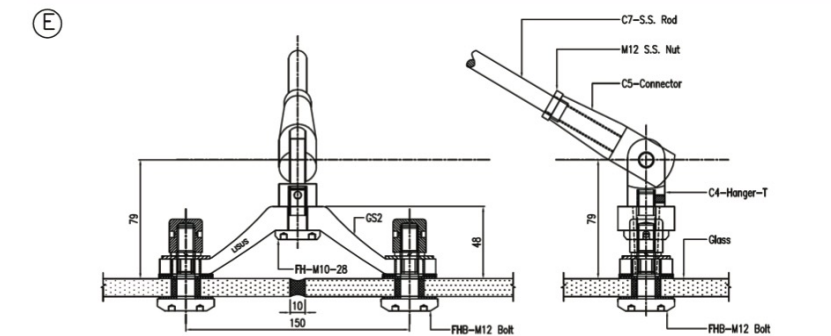
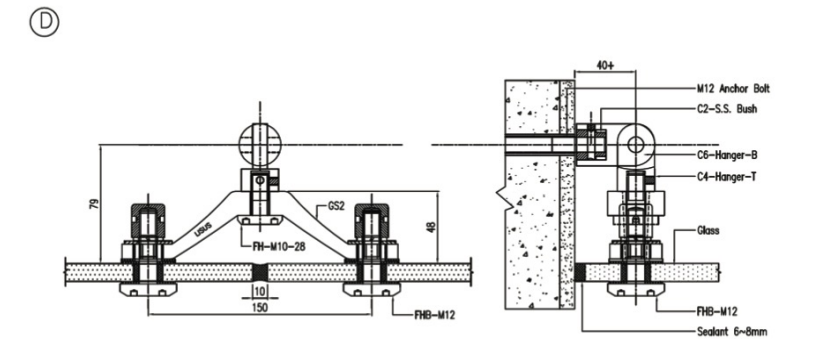
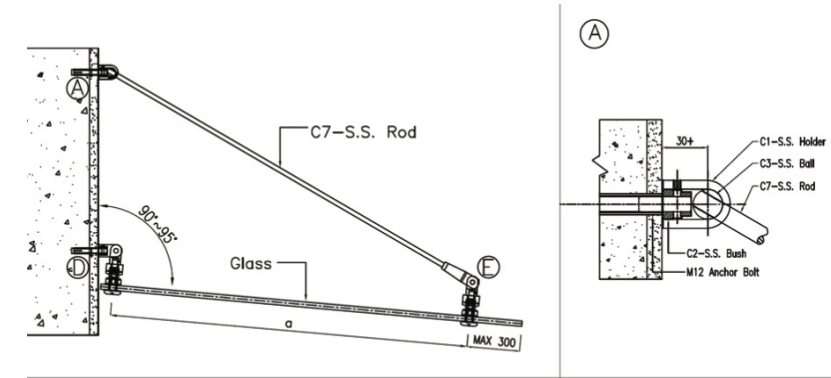
The Single Canopy is an aesthetically pleasing modern design which maintains LISUS's primary goals for all of our products; minimalistic, functionality and affordability. It operates on very few fittings to provide a structurally sound, easy to install glass canopy. Well engineered with attention to details, the Single canopy enables all components to be concealed which crafts a clean line and the perfect canopy.



LISUS

Double Canopy

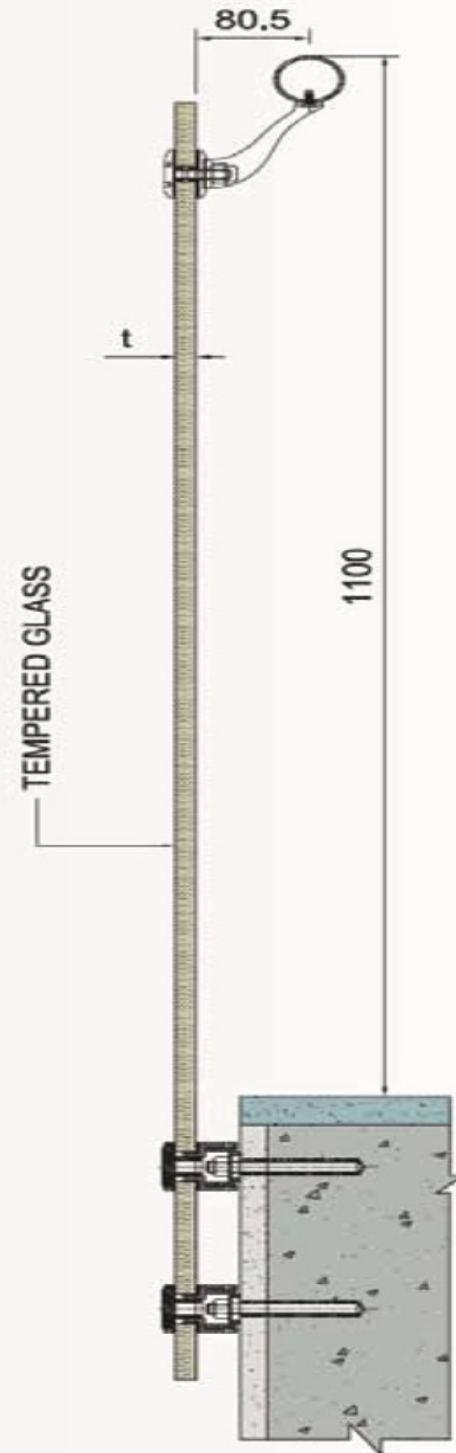
With the introduction of our G-Fitting to the canopy, the Double Canopy uses an additional fitting which joins two panels together, creating a clean continuous looking canopy. The simple design exudes individuality and expresses a unique style.



LISUS

U-Series Railings

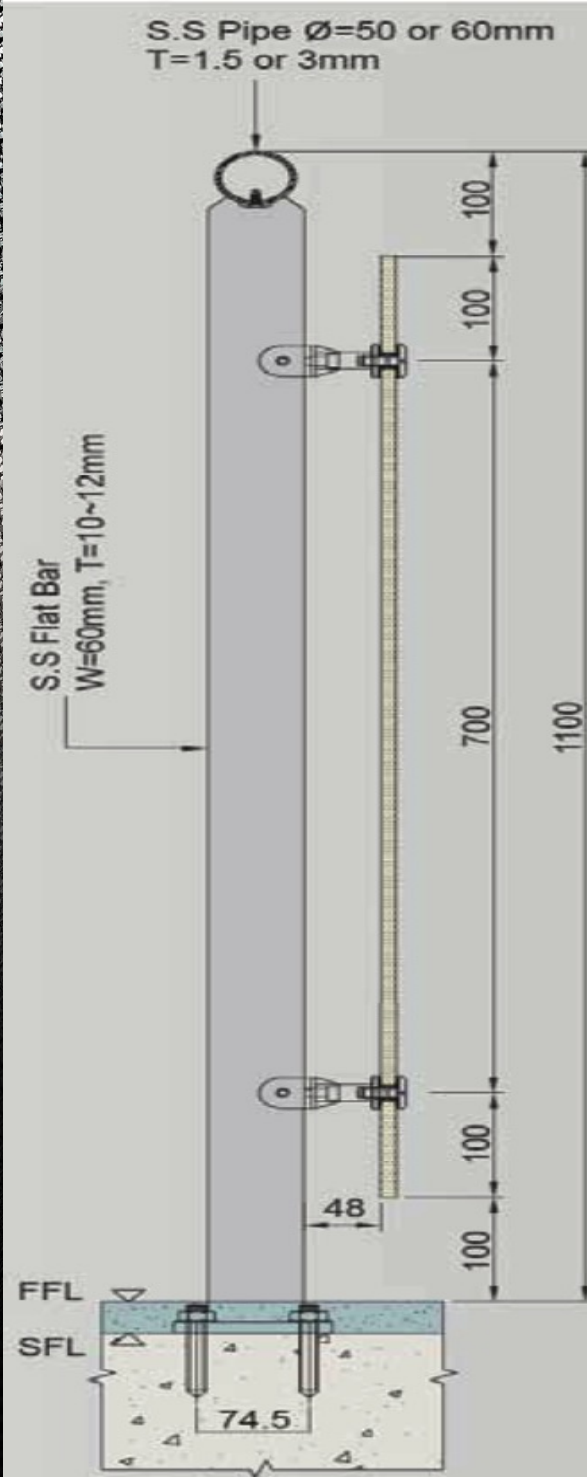
Aesthetics meets functionality; **U SERIES** is LISUS's contribution to handrailing and balustrade accents. Elegant and compact, **U SERIES** uses simple components, which makes installation easy. LISUS utilizes high-quality stainless steel to achieve a contemporary look that enhances the beauty of glass systems. The systems are designed to adapt to a wide range of interior applications used in newly built commercial developments or refurbished domestic property.



LISUS

U-Series Railings

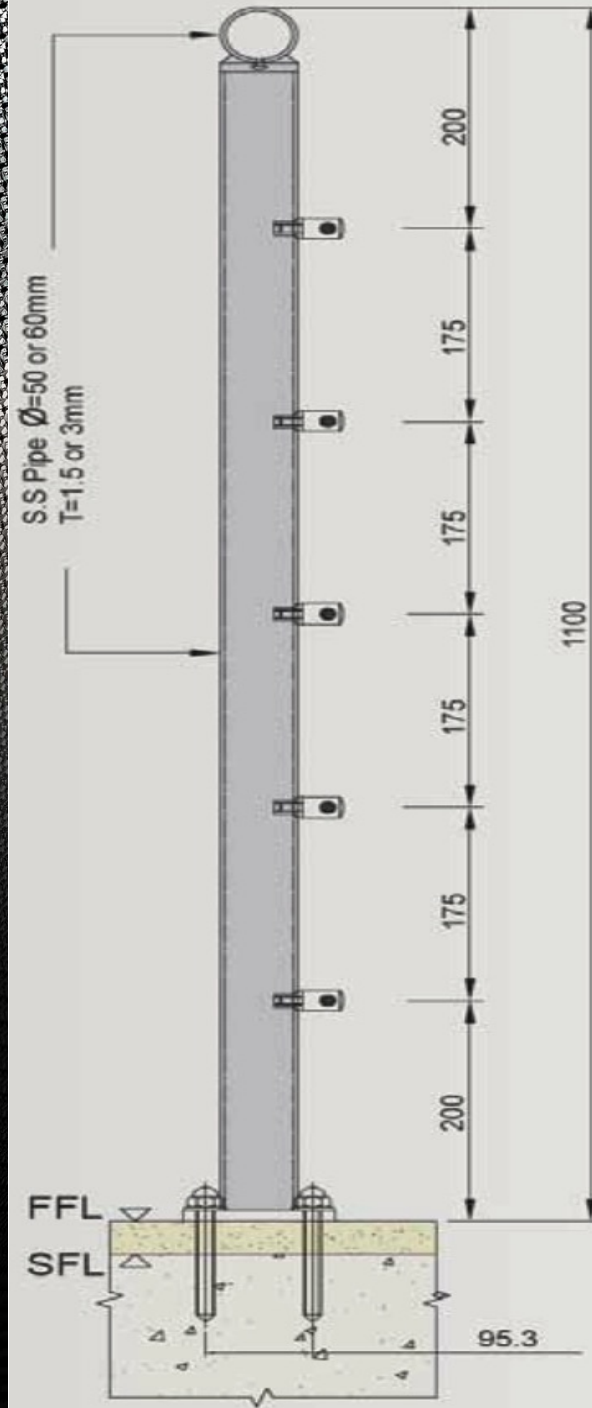
Aesthetics meets functionality; **U SERIES** is LISUS's contribution to handrailing and balustrade accents. Elegant and compact, **U SERIES** uses simple components, which makes installation easy. LISUS utilizes high-quality stainless steel to achieve a contemporary look that enhances the beauty of glass systems. The systems are designed to adapt to a wide range of interior applications used in newly built commercial developments or refurbished domestic property.



LISUS

U-Series Railings

Aesthetics meets functionality; **U SERIES** is LISUS's contribution to handrailing and balustrade accents. Elegant and compact, **U SERIES** uses simple components, which makes installation easy. LISUS utilizes high-quality stainless steel to achieve a contemporary look that enhances the beauty of glass systems. The systems are designed to adapt to a wide range of interior applications used in newly built commercial developments or refurbished domestic property.

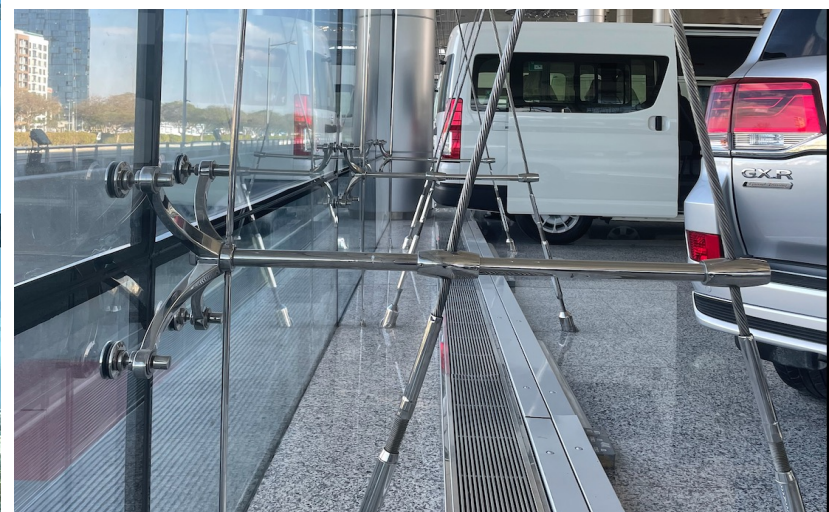




Ferrari Showroom, Dubai



Toyota Showroom Festival City, Dubai







Project Reference

Al Tayer Lincoln Showroom, Dubai

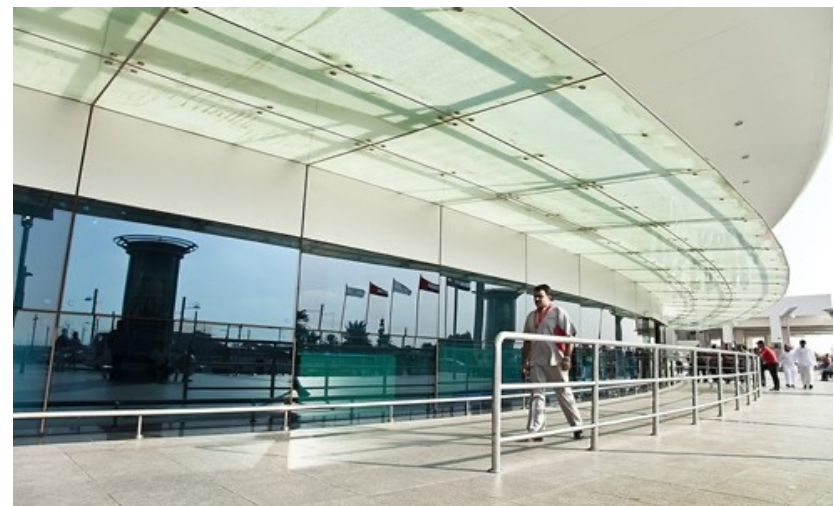
Designed by NEB





Sharjah International Airport

Designed by ADPI



Locations

Headquarters

KAPHS S.A.
CH-1820
Switzerland
Tel: +41 79 409 6741

UAE

KAPHS Middle East Building
Materials Trading LLC
Office No: 1701, Prime
Business Centre, JVC, Dubai
United Arab Emirates
Tel: +971 45 54 2145
Mob: +971 56 936 0379

India

KAPHS Architectural &
Aviation Products Pvt. Ltd
E – 78, South Ex.
New Delhi - 110049
Tel: +41 79 409 6741

Singapore

LISUS Technology Pte Ltd. 33
Ubi Avenue 3 #04-71,
Vertex Tower A
Singapore
Tel: +41 79 409 6741



M E E T I N G S E X P E C T A T I O N S

@kaphsgroup
sales@kaphsgroup.com
www.kaphsgroup.com